

NOTICE: This document contains references to Agilent Technologies. Agilent's former Test and Measurement business has become Keysight Technologies. For more information, go to **www.keysight.com**.





© **Agilent Technologies, Inc. 2000-2011**

5301 Stevens Creek Blvd., Santa Clara, CA 95052 USA

No part of this documentation may be reproduced in any form or by any means (including electronic storage and retrieval or translation into a foreign language) without prior agreement and written consent from Agilent Technologies, Inc. as governed by United States and international copyright laws.

Acknowledgments

Mentor Graphics is a trademark of Mentor Graphics Corporation in the U.S. and other countries. Microsoft®, Windows®, MS Windows®, Windows NT®, and MS-DOS® are U.S. registered trademarks of Microsoft Corporation. Pentium® is a U.S. registered trademark of Intel Corporation. PostScript® and Acrobat® are trademarks of Adobe Systems Incorporated. UNIX® is a registered trademark of the Open Group. Java™ is a U.S. trademark of Sun Microsystems, Inc. SystemC® is a registered trademark of Open SystemC Initiative, Inc. in the United States and other countries and is used with permission. MATLAB® is a U.S. registered trademark of The Math Works, Inc.. HiSIM2 source code, and all copyrights, trade secrets or other intellectual property rights in and to the source code in its entirety, is owned by Hiroshima University and STARC.

The following third-party libraries are used by the NlogN Momentum solver:

"This program includes Metis 4.0, Copyright © 1998, Regents of the University of Minnesota", <http://www.cs.umn.edu/~metis> , METIS was written by George Karypis (karypis@cs.umn.edu).

Intel® Math Kernel Library, <http://www.intel.com/software/products/mkl>

SuperLU_MT version 2.0 - Copyright © 2003, The Regents of the University of California, through Lawrence Berkeley National Laboratory (subject to receipt of any required approvals from U.S. Dept. of Energy). All rights reserved. SuperLU Disclaimer: THIS SOFTWARE IS PROVIDED BY THE COPYRIGHT HOLDERS AND CONTRIBUTORS "AS IS" AND ANY EXPRESS OR IMPLIED WARRANTIES, INCLUDING, BUT NOT LIMITED TO, THE IMPLIED WARRANTIES OF MERCHANTABILITY AND FITNESS FOR A PARTICULAR PURPOSE ARE DISCLAIMED. IN NO EVENT SHALL THE COPYRIGHT OWNER OR CONTRIBUTORS BE LIABLE FOR ANY DIRECT, INDIRECT, INCIDENTAL, SPECIAL, EXEMPLARY, OR CONSEQUENTIAL DAMAGES (INCLUDING, BUT NOT LIMITED TO, PROCUREMENT OF SUBSTITUTE GOODS OR SERVICES; LOSS OF USE, DATA, OR PROFITS; OR BUSINESS INTERRUPTION) HOWEVER CAUSED AND ON ANY THEORY OF LIABILITY, WHETHER IN CONTRACT, STRICT LIABILITY, OR TORT (INCLUDING NEGLIGENCE OR OTHERWISE) ARISING IN ANY WAY OUT OF THE USE OF THIS SOFTWARE, EVEN IF ADVISED OF THE POSSIBILITY OF SUCH DAMAGE.

AMD Version 2.2 - AMD Notice: The AMD code was modified. Used by permission. AMD copyright: AMD Version 2.2, Copyright © 2007 by Timothy A. Davis, Patrick R. Amestoy, and Iain S. Duff. All Rights Reserved. AMD License: Your use or distribution of AMD or any modified version of AMD implies that you agree to this License. This library is free software; you can redistribute it and/or modify it under the terms of the GNU Lesser General Public License as published by the Free Software Foundation; either version 2.1 of the License, or (at your option) any later version. This library is distributed in the hope that it will be useful, but WITHOUT ANY WARRANTY; without even the implied warranty of MERCHANTABILITY or FITNESS FOR A PARTICULAR PURPOSE. See the GNU Lesser General Public License for more details. You should have received a copy of the GNU Lesser General Public License along with this library; if not, write to the Free Software Foundation, Inc., 51 Franklin St, Fifth Floor, Boston, MA 02110-1301 USA Permission is hereby granted to use or copy this program under the terms of the GNU LGPL, provided that the Copyright, this License, and the Availability of the original version is retained on all copies. User documentation of any code that uses this code or any modified version of this code must cite the Copyright, this License, the Availability note, and "Used by permission." Permission to modify the code and to distribute modified code is granted, provided the Copyright, this License, and the Availability note are retained, and a notice that the code was modified is included. AMD Availability: <http://www.cise.ufl.edu/research/sparse/amd>

UMFPACK 5.0.2 - UMFPACK Notice: The UMFPACK code was modified. Used by permission. UMFPACK Copyright: UMFPACK Copyright © 1995-2006 by Timothy A. Davis. All Rights Reserved. UMFPACK License: Your use or distribution of UMFPACK or any modified version of UMFPACK implies that you agree to this License. This library is free software; you can redistribute it and/or modify it under the terms of the GNU Lesser General Public License as published by the Free Software Foundation; either version 2.1 of the License, or (at your option) any later version. This library is distributed in the hope that it will be useful, but WITHOUT ANY WARRANTY; without even the implied warranty of MERCHANTABILITY or FITNESS FOR A PARTICULAR PURPOSE. See the GNU Lesser General Public License for more details. You should have received a copy of the GNU Lesser General Public License along with this library; if not, write to the Free Software Foundation, Inc., 51 Franklin St, Fifth Floor, Boston, MA 02110-1301 USA Permission is hereby granted to use or copy this program under the terms of the GNU LGPL, provided that the Copyright, this License, and the Availability of the original version is retained on all copies. User documentation of any code that uses this code or any modified version of this code must cite the Copyright, this License, the Availability note, and "Used by permission." Permission to modify the code and to distribute modified code is granted, provided the Copyright, this License, and the Availability note are retained, and a notice that the code was modified is included. UMFPACK Availability: <http://www.cise.ufl.edu/research/sparse/umfpack> UMFPACK (including versions 2.2.1 and earlier, in FORTRAN) is available at <http://www.cise.ufl.edu/research/sparse> . MA38 is available in the Harwell Subroutine Library. This version of UMFPACK includes a modified form of COLAMD Version 2.0, originally released on Jan. 31, 2000, also available at <http://www.cise.ufl.edu/research/sparse> . COLAMD V2.0 is also incorporated as a built-in function in MATLAB version 6.1, by The MathWorks, Inc. <http://www.mathworks.com> . COLAMD V1.0 appears as a column-preordering in SuperLU (SuperLU is available at <http://www.netlib.org>). UMFPACK v4.0 is a built-in routine in MATLAB 6.5. UMFPACK v4.3 is a built-in routine in MATLAB 7.1.

Errata The ADS product may contain references to "HP" or "HPEESOF" such as in file names and directory names. The business entity formerly known as "HP EEsof" is now part of Agilent Technologies and is known as "Agilent EEsof". To avoid broken functionality and to maintain backward compatibility for our customers, we did not change all the names and labels that contain "HP" or "HPEESOF" references.

Warranty The material contained in this document is provided "as is", and is subject to being changed, without notice, in future editions. Further, to the maximum extent permitted by applicable law, Agilent disclaims all warranties, either express or implied, with regard to this documentation and any information contained herein, including but not limited to the implied warranties of merchantability and fitness for a particular purpose. Agilent shall not be liable for errors or for incidental or consequential damages in connection with the furnishing, use, or performance of this document or of any information contained herein. Should Agilent and the user have a separate written agreement with warranty terms covering the material in this document that conflict with these terms, the warranty terms in the separate agreement shall control.

Technology Licenses The hardware and/or software described in this document are furnished under a license and may be used or copied only in accordance with the terms of such license. Portions of this product include the SystemC software licensed under Open Source terms, which are available for download at <http://systemc.org/> . This software is redistributed by Agilent. The Contributors of the SystemC software provide this software "as is" and offer no warranty of any kind, express or implied, including without limitation warranties or conditions or title and non-infringement, and implied warranties or conditions merchantability and fitness for a particular purpose. Contributors shall not be liable for any damages of any kind including without limitation direct, indirect, special, incidental and consequential damages, such as lost profits. Any provisions that differ from this disclaimer are offered by Agilent only.

Restricted Rights Legend U.S. Government Restricted Rights. Software and technical data rights granted to the federal government include only those rights customarily

Licensing (For Administrators)

provided to end user customers. Agilent provides this customary commercial license in Software and technical data pursuant to FAR 12.211 (Technical Data) and 12.212 (Computer Software) and, for the Department of Defense, DFARS 252.227-7015 (Technical Data - Commercial Items) and DFARS 227.7202-3 (Rights in Commercial Computer Software or Computer Software Documentation).

Licensing (For Administrators)

Licensing Overview	6
Node-locked License	7
Floating License	8
Understand Your License File	9
Recognize License Type	14
Licensing Attributes	16
Setting Up Licenses on Windows	19
Setting Up Floating Licenses on Windows	20
Setting Up Node-locked License on Windows	21
Setting Up Licenses on Linux and Solaris	25
Setting Up Floating Licenses on Linux and Solaris	26
Setting Up Node-locked License on Linux and Solaris	27
Licensing Behavior	31
Product Selector	33
Licensing Tools	35
License Manager	36
Advanced Licensing Configuration Options	37
Accessing Licenses through a Firewall	38
Creating Options File	39
Agilent EEsof Specific Licensing Environment Variables	40
Multiple Server Configurations	42
Remote and Distributed Simulation Licenses	42

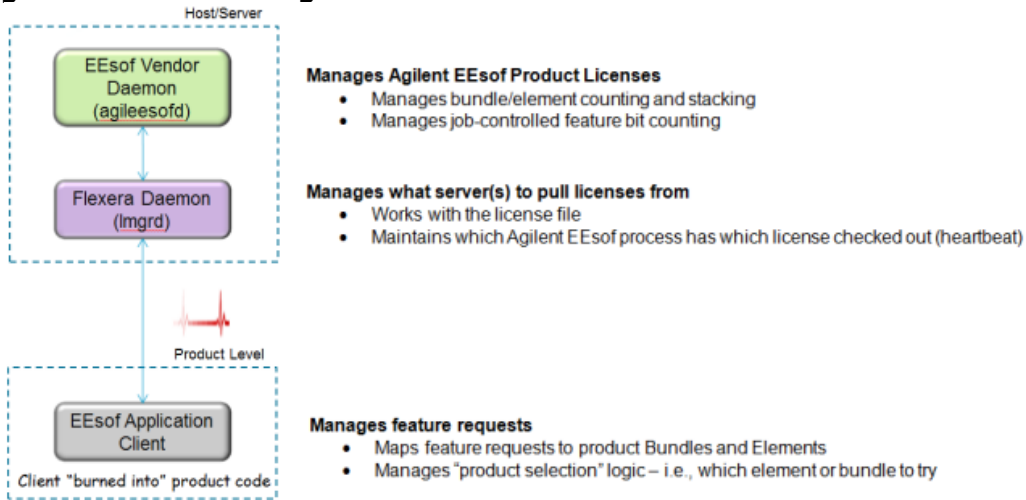
Licensing Overview

This section provides an overview of Agilent EEsof Licensing architecture.

Agilent EEsof licensing architecture comprises of three components to manage the licensing scheme:

- Agilent EEsof Vendor Daemon (***agileesofd***) to manage product licenses
- FlexNet Daemon (***lmgrd***) to manage servers
- Agilent EEsof Application Client to manage feature requests.

Figure: Agilent EEsof Licensing Architecture



Agilent EEsof licensing scheme supports only counted licenses that are either *node-locked* (license) or *floating* (license).

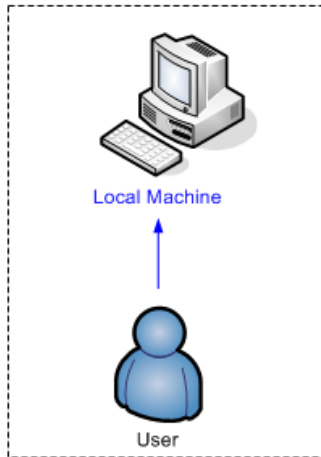
Contents

- *Node-locked Licenses* (license)
- *Floating Licenses* (license)
- *Understand Your License File* (license)
- *Recognize License Type* (license)

Node-locked License

A **node-locked license** node-locked locks the software to a local machine. Both license server manager (**Imgrd**) and vendor daemon (**agileesofd**) run on the local machine for which the license is issued.

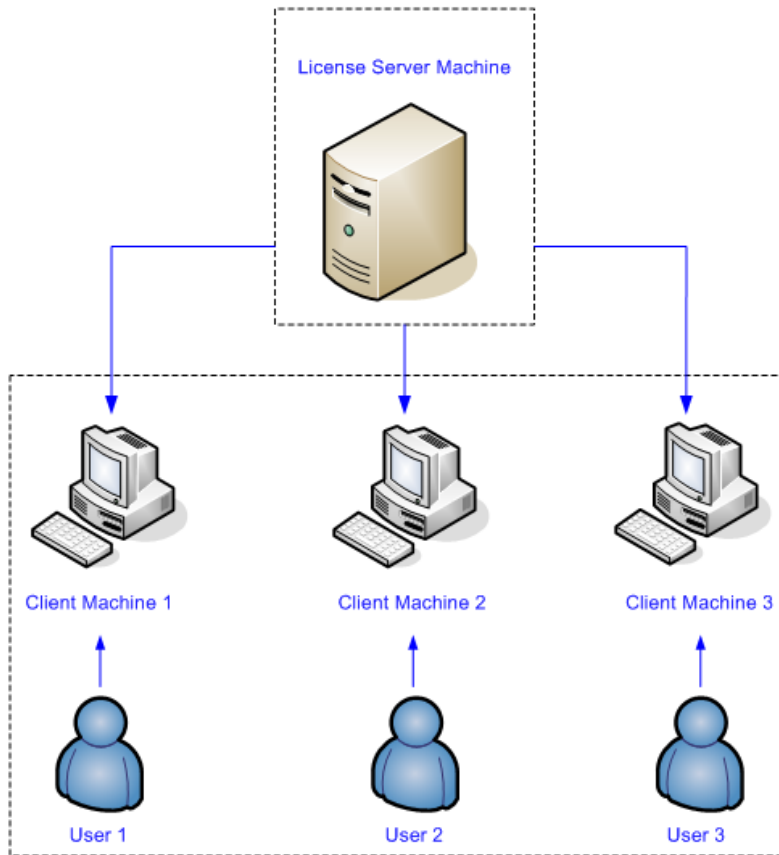
Figure: Nodelocked License Setup



Floating License

In case of a **floating (network) license**, the Agilent EEsof software application is installed on one or more client machines and uses the environment variable `<PRODUCT>_LICENSE_FILE` to point to the license server. Both license server manager (**lmgrd**) and vendor daemon (**agileesofd**) run on the license server system.

Figure: Floating License Setup



Understand Your License File

The license file contains codewords that allow you to use specific features of an Agilent EEsof product. A license file contains two major sections - License Summary Header and License Codewords.

License Summary Header

License summary header provides an overview of all the codewords included in the license file, legalese and setup instructions.

Sample License Summary Section

```
#####
#                               #
#           SUPPORT             #
#####
#
#
# If you have questions regarding this license file, please contact
# EEsof Business Support Center: 800-507-6274 or eesof_bsc@agilent.com
#
#
# To understand or download Agilent EEsof licensing technology please visit
# http://www.agilent.com/find/eesof-flexnet-downloads
#
# To download Agilent EEsof Software please visit
# http://edocs.soco.agilent.com/display/downloads/Downloads
#
#
# If you are unable to set up your license file then please contact
# EEsof Technical Support:  US - 800-473-3763 or eesof-usa_support@agilent.com
#                               Asia - eesof-asia_support@agilent.com
#                               Australia: 1800-629-485
#                               China:    800-810-0189
#                               Hong Kong: 800-938-693
#                               India:    1800-11-2626
#                               Malaysia: 1800-888-848
#                               Singapore: 1800-375 8100
#                               Taiwan:   0800-047-866
#                               Thailand: 1800-375-8100
#                               Korea:    080-769-0800
#                               Europe - 1-800-473-EESOF (1-800-473-3673) or eesof-
# europe_support@agilent.com
#                               Japan - 81 (426) 60-8416 or eesof-japan_support@agilent.com
#
# or visit: http://www.agilent.com/find/eesof-support
#
#
# THIS LICENSE HAS BEEN GENERATED FOR HOSTID 68B599F512D7
#
#####
#           LICENSE SUMMARY
#
# All "LICENSE pjc_XXX" lines are for EEsof license functionality only - Please ignore
#####
#
# This is a list of options contained in this license file
#
#License      Description
#  Expiration  Qty  Version  Hostid
#
#W2250BT-1F3      3 months node-locked license ADS Inclusive Bundle
#  05-JAN-2013  1    2.8     68B599F512D7
#LICENSE NAME b_inclusive
#
#
#####
#           LEGAL
#####
# The Use of this license file is acceptance of Agilent EEsof Licensing usage terms and
conditions.
```

Licensing (For Administrators)

```
#
#####
#                               INSTRUCTIONS
#####
#
# License Setup for 2011+ version software:
#
# Windows Platforms:
# 1) Place this file on machine where file is intended: For MAC address tied licenses, ensure
this file is placed on the machine whose MAC address agrees with
# the one appearing in the SERVER line of this file. For dongle tied license, ensure this
file is placed on the machine where the dongle is inserted.
# 2) If this is a dongle tied license, insert your Agilent supplied USB dongle
# 3) Start your Agilent EEsof product. A license wizard will start to guide you through the
license setup.
#
#
# Linux/UNIX
# 1) Define {PRODUCT}_LICENSE_FILE in your license client environment where PRODUCT=ADS,
EMPRO, ICCAP, GENESYS, SYSTEMVUE, or GOLDENGATE
# 2) Place this file on the license server machine where file is intended: For MAC address
tied licenses, it is the machine whose MAC address
# agrees with the one appearing in the SERVER line of this file. For dongle tied license,
it is the machine where the dongle is inserted.
# (No dongle support for Linux 64bit systems)
# 3) Acquire FLEXnet v11.9 bits from either $HPEESOF_DIR/EEsof_License_Tools or from:
#
http://www.agilent.com/find/eesof-flexnet-downloads
# 4A) IF License server not previously installed: From FLEXnet folder, run ./lmgrd .c <Path-
To-License-File> -l <Path-To-Flex-Output-File>
# 4B) IF License server previously installed: From FLEXnet folder, run ./lmutil lmreread .c
<Path-To-License-File>
#
#
# LICENSE PATH INFORMATION
#
# Windows: No environment variable needed. License wizard sets this up automatically. Value is
entered into Windows Registry. Do not explicitly
# define License path environment variable.
#
# Linux/Unix: Define {PRODUCT}_LICENSE_FILE in your license client environment where PRODUCT=ADS,
EMPRO, ICCAP, or GOLDENGATE.
# Example: ADS_LICENSE_FILE for Advanced Design System.
#
#
# License Setup for ADS Pre-2011 software AND NO 2011 installed
# Windows Platform:
#
# 1) If the EEsof License Tools Installer have been previous installed, skip to step 5
# 2) Download Agilent EEsof License Tools Installer from www.agilent.com/find/eesof-
flexnet-downloads to temporarily place on local disk
# 3) Run as Administrator eesof_license_tools_installer_<date>.exe (this installs EEsof License
Tools)
# 4) Change directories to installation bin folder EEsof License Tools. For example, C:\Program
Files\agilent\EEsof_License_Tools\bin
# 5) Find the executable "aglmwizard.exe" and Run As Administrator.
# 6) Follow the steps in the license server to setup local license server.
# 7) In Windows System Properties, define AGILEESOFD_LICENSE_FILE to @<machine-where-this-
license-file-is-installed>
#
# Linux/UNIX
# 1) Define AGILEESOFD_LICENSE_FILE in your license client environment
# 2) Place this file on the license server machine where file is intended: For MAC address
tied licenses, it is the machine whose MAC address
# agrees with the one appearing in the SERVER line of this file. For dongle tied license,
it is the machine where the dongle is inserted.
# 3) Acquire FLEXnet v11.9 bits from either $HPEESOF_DIR/EEsof_License_Tools or from:
http://www.agilent.com/find/eesof-flexnet-downloads
# 4A) IF License server not previously installed: From FLEXnet folder, run ./lmgrd .c <Path-
To-License-File> -l <Path-To-Flex-Output-File>
# 4B) IF License server previously installed: From FLEXnet folder, run ./lmutil lmreread .c
<Path-To-License-File>
#
```

Licensing (For Administrators)

```
#
#####LICENSE KEYS START HERE#####
#
SERVER this_host 68B599F512D7
VENDOR agileesofd
#
INCREMENT b_inclusive agileesofd 2.8 05-jan-2013 uncounted \
VENDOR_STRING="68B599F512D7P=#1,2,3,4,7,8,9,10,11,13,14,15,18,19,20,22,23,24,25,26,27,29,30,31,32
,33,34,35,36,39,40,41,42,43,44,45,46,47,48,53,55,62,63,65,66,67,68,69,105,106,107,108,109,110,111
,113,115,116,121,122,123,124,126,128,131,132,133,135,138,141,142,144,145,146,149,154,155,156,157,
186,202,204,205,206,207,208,209,210,211,213,214,215,219,221,223,226,313D=#W2250BP,ADS_Inclusive;e
_core,e_phys_layout,e_sim_harmonic,e_link_rfc,e_sim_trans_conv,e_sim_momentum,e_sim_sys,e_sim_ve
rilog_ams,e_sim_envelope,e_sim_verilog_a,e_sim_rf_arch,e_mdl_wireless_mature,e_mdl_wireless_int,e
_sim_fem \
: IUIWQDZ PFXBHLF QXEZRFX KWEYDLF NGPHEBQ KRWZQGY EXT" HOSTID=68b599f512d7
ISSUER=LICENSEID=2760699 START=05-Oct-2012 SIGN="00A5 8C36 20E9 88BA 9FF6 00DB 888A E1F7 07D9
773B 1403 F314 4106 0152 C58C 47EA 2D5C 9B31 26B7 C5B5 B325"
INCREMENT pjc_b_inclusive agileesofd 2.8 05-jan-2013 uncounted VENDOR_STRING="68B599F512D7 :
XBQKRWZ QGYEXTU IWQDZPB 1ZWGMDD WXYUGSH FUWXJZ RXFKWEY DLFNGPH E" HOSTID=68b599f512d7
ISSUER=LICENSEID=2760699 START=05-Oct-2012 SIGN="030D 8488 9159 BB01 1621 A72A 4939 D3E0 502D
D4DE 3E01 2069 E5BC 28DE D8C2 0265 EAA6 E18F 49C6 F7D7 3C86"
#
#####LICENSE END#####
```

License Codewords

License codewords follow FlexNet format and contains the server, vendor, and increment lines.

Sample License Codewords Section

```
# sample license file
SERVER this_host D8D385997F8A
VENDOR agileesofd
INCREMENT b_core agileesofd 3.0 14-sep-2013 1
VENDOR_STRING="D8D385997F8AP=#1,7,8,13,14,25,27,66,67,105,110,116,131,132,156D=#W2200BP,ADS_Core;
e_core : MUFNCUI WQDZPFX QTBMCEY SW2TFGC OWKGNHJ UIB" HOSTID=d8d385997f8a
ISSUER=LICENSEID=1598592 START=19-Sep-2012 SIGN="033F C701 6926 5CB6 5505 F6EC D5EE E3FE F302
A765 9201 008B E71B FE5B 2308 EE8F D5C0 9374 AE0F 2F68 24CD"
INCREMENT pjc_b_core agileesofd 3.0 14-sep-2013 1 VENDOR_STRING="D8D385997F8A : RQHSXF2 AQCOVRN
H1FUYQN LMDYFPG SHFUWXJ EZRYAU EQEFZHA" HOSTID=d8d385997f8a ISSUER=LICENSEID=1598592 START=19-
Sep-2012 SIGN="031A EA80 70C0 60D1 CAC4 B206 DD99 C63F DB63 9DB8 E901 B4E8 F500 45F4 25F1 0B27
0DD1 6919 3CEC 119F FD6F"
```

The following provides a brief overview of the syntax of the statements included in the License Codewords section. For further details, refer to the License File Syntax in [FlexNet Publisher's License Administration Guide](#) .

The License Codewords section, usually contains three pieces of information: the `SERVER` line, the `VENDOR` line, and all the `INCREMENT` lines representing the licensed codewords.

SERVER Line Syntax

Agilent supports both single server and redundant servers, as per FlexNet standard configurations. In case of single server, the `SERVER` line syntax is:

```
SERVER this_host <hostid> [port]
```

In case of redundant servers, the `SERVER` line syntax is:

```
SERVER <hostname1> <hostid1> <port>
SERVER <hostname2> <hostid2> <port>
SERVER <hostname3> <hostid3> <port>
```

where,

- `hostname1`, `hostname2`, `hostname3` are the system host names or IP address. String returned by the `hostname` or **`uname -n`** command on UNIX; or by the **`ipconfig /all`** command on Windows. Note that redundant servers should all have the same OS, that is, you cannot have one server on Solaris, and another on Linux.

Licensing (For Administrators)

- `hostid`, `hostid1`, `hostid2`, `hostid2` are usually the string returned by the ***lmhostid*** command. This is specified in the issued license file by Agilent EEsof.
- Port is the TCP/IP port number to use. This is an optional field for single server configuration, but is a required field for redundant server configuration. A valid number is any unused port number between 0 and 64000. On UNIX, choose a port number greater than 1024, because anything less than or equal to 1024 are reserved. If no TCP/IP port number is specified, one of the default ports in the range of 27000 through 27009 is used.

i ***this_host*** is the generic host name for the computer for which the node-locked license is issued, and can be used as is without replacing it with the real computer host name in that case.

VENDOR Line Syntax

The **VENDOR** line specifies the vendor daemon information. The **VENDOR** line syntax is:

```
VENDOR agileesofd [<path_to_agileesofd> agileesofd ] [ [OPTIONS=]  
<options_file_path> agileesofd.opt ] [ [PORT=] port ]
```

Example 1

```
VENDOR agileesofd
```

Example 2

```
VENDOR agileesofd C:\Program Files\Agilent\EEsof_License_Tools\bin\agileesofd  
C:\Program Files\Agilent\EEsof_License_Tools\bin\licenses\agileesofd.opt  
PORT=5346
```

where,

- *agileesofd* is the name of Agilent EEsof vendor daemon.
- *C:\Program Files\Agilent\EEsof_License_Tools\bin\agileesofd* is the full path-name to the vendor daemon executable.
- *C:\Program Files\Agilent\EEsof_License_Tools\bin\licenses\agileesofd.opt* is the full path-name to the FlexNet options file.
- 5346 is the specified TCP/IP port number for the vendor daemon.

INCREMENT Line Syntax

The **INCREMENT** line specifies information about a licensed codeword. Codeword name, vendor daemon name, license version, license expiration date, license count, and vendor string are some of the important information included. The **INCREMENT** line syntax is:

```
INCREMENT <feature> agileesofd <license_version> <license_expiry_date>  
<license_count> VENDOR_STRING=<agilent_eesof_vendor_string> [HOSTID=<hostid>]  
START=<license_start_date> SIGN=<encoded signature to authenticate this  
INCREMENT line>
```

Example

```
INCREMENT b_core agileesofd 3.0 06-feb-2013 1 \  
VENDOR_STRING="D8D385997F8AP=#1,7,8,13,14,25,27,66,67,105,110,116,131,132,156D=#W2200BP,ADS_Core;e  
_core : \  
MUFNCUI WQZPFX QTBMCYE SW2TFGC OWKGNHJ UIB" HOSTID=d8d385997f8a ISSUER=LICENSEID=1598592 \  
START=19-Sep-2012 SIGN="033F C701 6926 5CB6 5505 F6EC D5EE E3FE F302 A765 9201 008B E71B FE5B 2308  
EE8F D5C0 9374 AE0F 2F68 24CD"
```

where,

- *b_core* is the name of the feature being licensed.
- *agileesofd* is the name of Agilent EEsof vendor daemon.

- 3.0 is the license version.
- 06-feb-2013 is the expiration date of license.
- 1 is the number of license(s).

See Also

Recognize License Type (license)

Recognize License Type

You can determine the license type to be node-locked or floating by looking at the INCREMENT lines in your license file.

Node-locked License

The INCREMENT line corresponding to a **node-locked license** embeds the CPU ID of the **license server** machine or the FlexNet ID of the dongle in the HOSTID= part of the statement.

Example 1: Node-locked license tied to a CPU ID

```
SERVER this_host D8D385997F8A
VENDOR agileesofd
INCREMENT b_core agileesofd 3.0 14-sep-2013 1
VENDOR_STRING="D8D385997F8AP=#1,7,8,13,14,25,27,66,67,105,110,116,131,132,156D=#W2200BP,ADS_Core;e_core :
MUFNCUI WQDZPFQ QTBMCE SW2TFGC OWKGNHJ UIB" HOSTID=d8d385997f8a ISSUER=LICENSEID=1598592
START=19-Sep-2012
SIGN="033F C701 6926 5CB6 5505 F6EC D5EE E3FE F302 A765 9201 008B E71B FE5B 2308 EE8F D5C0
9374 AE0F 2F68 24CD"
```

As shown above, presence of HOSTID=d8d385997f8a indicates that codeword b_core is tied to a CPU of the ID d8d385997f8a.

Example 2: Node-locked license tied to a USB dongle

```
SERVER this_host FLEXID=10-0BEBCD44
VENDOR agileesofd
INCREMENT b_core agileesofd 3.0 14-sep-2013 1
VENDOR_STRING="10-
0BEBCD44P=#1,7,8,13,14,25,27,66,67,105,110,116,131,132,156D=#W2200BP,ADS_Core;e_core :
MUFNCUI WQDZPFQ QTBMCE SW2TFGC OWKGNHJ UIB" HOSTID=FLEXID=10-0BEBCD44 ISSUER=LICENSEID=15
98593 START=19-Sep-2012
SIGN="002F CADB 63C8 0FCE DF16 BBA4 4AAB A335 B54F F121 3A02 79A9 D9A9 A701 F727 AAF8 791E
0615 BD0B D95F 87C5"
```

As shown above, presence of HOSTID=FLEXID=10-0BEBCD44 indicates that codeword b_core is tied to a dongle of the ID 10-0BEBCD44.

Floating License

An INCREMENT line that does not have the HOSTID= identifier embedded in it indicates the license to be a **floating (network) license**.

Example 1: Floating license tied to a CPU ID

```
SERVER delly 001EC940F06A 27001
VENDOR agileesofd
INCREMENT b_cct_layout_momentum agileesofd 3.0 07-feb-2014 10 \
VENDOR_STRING="001EC940F06AP=#1,2,3,4,7,8,9,10,11,13,14,18,19,20,22,23,24,25,26,27,55,62,63,65,66,
67,68,105,106,107,108,109,110,111,115,116,131,132,133,135,154,155,156,1001007D=#W2214BT,ADS_Core+L
ayout+CircuitSim+MomentumG2;e_core,e_phys_layout,e_sim_envelope,e_sim_harmonic,e_sim_momentum,e_si
m_trans_conv \
: CNRHDNH JB1CQEZ RXYAGCK RXFTSLT KBJMBHA JIYPOUK DFYPRWE \
QGY10EZ QGAUHJL U" START=10-aug-2012 SIGN="0118 C5B9 0443 57BB \
CE05 08DB 0539 D627 D41B C8BC 8C00 5000 EA38 3BF4 B1A5 9E8D \
06F3 E837 63C4 4B05 31DE"
```

Licensing (For Administrators)

As shown above, no HOSTID in the INCREMENT line indicates that codeword b_cct_layout_momentum is a floating license.

See Also

Setting Up Licenses on Windows (license)

Setting Up Licenses on Linux and Solaris (license)

Licensing Attributes

Agilent EEsof *Licensing Behavior* (license) is administered by the following attributes:

- [User-Display-Host \(UDH\)](#)
- [License Security](#)
- [License Counting](#)
- [Job Control](#)
- [License Codeword Version](#)
- [FlexNet Version](#)

User-Display-Host (UDH)

All Agilent EEsof licenses are counted, with User-Display-Host as the base of forming the license checkout identify. Each unique User-Display-Host consumes one count of a license. Additional licenses are required if user, display or host is changed. For example, the following cases would cause an additional count of license to be checked out:

- A second user logs on the same host. This is because `user` is changed.
- The user moves to another terminal and launches another session of the product. This is because display is changed.

License Security

All Agilent EEsof licenses are secured by codewords, which are tied to a CPU ID or a USB dongle.

- CPU ID: Specifies the unique ID of a computer. It uses the physical address (hostid) of your computer.
- USB Dongle: Uses the dongle ID (or the FlexNet ID) of your USB dongle.

Our licensing scheme supports counted node-locked licenses and floating licenses.

- Node-locked License: A node-locked license can be used on a specific computer to which the license is tied. It allows an Agilent EEsof Product to be used on a single computer with a single display by a single user. The user, license, and computer must physically co-locate.
- Floating (Network) License: A floating (network) license can be shared among multiple users across a computer network. Floating license support is provided for a single and multiple servers (including distributed product servers, peak servers, and redundant servers). With a floating license, an individual feature contained in a bundle or element can be run locally or remotely by a single user.

Agilent's Licensing, on a best effort basis, supports remote access via Windows Remote Desktop, VNC, Citrix, and Exceed. A floating license is required for remote access. This functionality is not supported with a node-locked license.

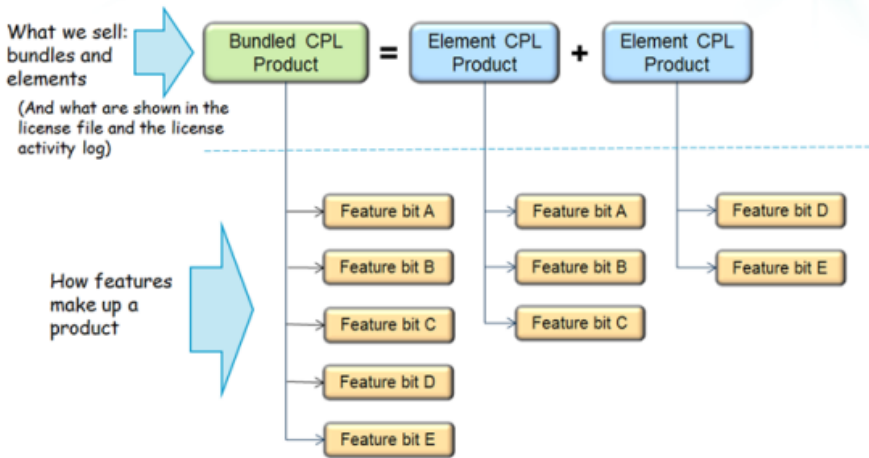
Example

A user starts an ADS session on Computer A. One core bundle with simulator license is checked out. If the same user tries to launch another ADS session using Remote Desktop, an additional license will be checked-out because the host has changed.

License Counting

Agilent EEsof licensing supports only counted licenses. The count associated with a license specifies the maximum concurrent use of that license. Each Agilent EEsof license comes in the form of a bundle or an element, which in turn contains one or more features.

Figure: Bundles and Elements Composition



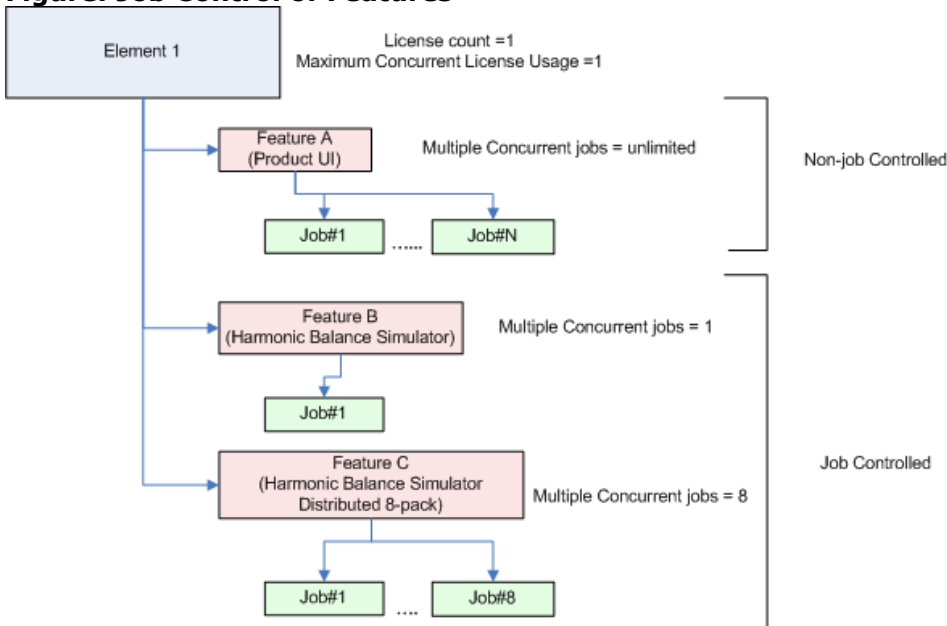
When a license count limit is reached, that license is no longer available for additional use.

Job Control

Some features contained in a bundle or an element, are job controlled. Job control limits the concurrent use of a feature. Simulators and models are typically job controlled features. Most job controlled features have a job-control limit of one—Harmonic Balance simulator, Momentum simulator, LTE wireless library are examples of this class—and some have greater than one limit to support parallel computing—Momentum turbo, 8-pack transient/convolution, quad-pack GoldenGate simulation are some of the examples of this type.

In Contrast to job controlled features, non job-controlled features entitle a single UDH to share one count of the license unlimited times. Environment GUI features are typically of this type.

Figure: Job Control of Features



License Codeword Version

Each Agilent software release comes with a base license codeword version requirement. The base license codeword version is the minimum number that enables a release to run. There is also an upper limit of the codeword version each software release enforces - currently this upper limit is set for additional two versions beyond the base version. The

Licensing (For Administrators)

software cannot run if the codeword version exceeds that upper limit.

Following chart summarizes the license codeword versions compatible to each Agilent EEsof software releases.

Product/Release												
ADS	2006 A		2008	2009	2009 U1		2011.01	2011.05	2011.10			2012.08
License Codeword Version	<u>v2.6</u> , v2.7, v2.8		<u>v2.7</u> , v2.8, v2.9	<u>v2.8</u> , v2.9, v3.0	<u>v2.8</u> , v2.9, v3.0		<u>v2.9</u> , v3.0, v3.1	<u>v2.9</u> , v3.0, v3.1	<u>v2.9</u> , v3.0, v3.1			<u>v3.0</u> , v3.1, v3.2
EMPro	2008	2008.1	2009	2010.07				2011.02	2011.04	2011.07	2011.12	2012.09
License Codeword Version	<u>v2.6</u> , v2.7, v2.8	<u>v2.6</u> , v2.7, v2.8	<u>v2.7</u> , v2.8, v2.9	<u>v2.8</u> , v2.9, v3.0				<u>v2.9</u> , v3.0, v3.1	<u>v2.9</u> , v3.0, v3.1	<u>v2.9</u> , v3.0, v3.1	<u>v2.9</u> , v3.0, v3.1	<u>v3.0</u> , v3.1, v3.2
GoldenGate	4.1.x	4.2.x		4.3.x	4.4.x			2011.02 (4.5.x)	2011.10 (4.6.x)			2012.10 (4.7.x)
License Codeword Version	<u>v2.6</u> , v2.8, v2.9	<u>v2.6</u> , v2.8, v2.9		<u>v2.8</u> , v2.9, v3.0	<u>v2.8</u> , v2.9, v3.0			<u>v2.9</u> , v3.0, v3.1	<u>v2.9</u> , v3.0, v3.1			<u>v3.0</u> , v3.1, v3.2
SystemVue				2009.05	2009.08	2010.01	2010.07	2011.03	2011.10	2012.06		
License Codeword Version				<u>v2.8</u> , v2.9, v3.0	<u>v2.8</u> , v2.9, v3.0	<u>v2.8</u> , v2.9, v3.0	<u>v2.8</u> , v2.9, v3.0	<u>v2.9</u> , v3.0, v3.1	<u>v2.9</u> , v3.0, v3.1	<u>v2.9</u> , v3.0, v3.1		
Genesys	2007.03	2008.01		2009.04	2010.05			2012.01				
License Codeword Version	<u>v2.6</u>	<u>v2.6</u> , v2.8		<u>v2.8</u> , v2.9, v3.0	<u>v2.8</u> , v2.9, v3.0			<u>v2.9</u> , v3.0, v3.1				
IC-CAP			2008	2009	2009 U1	2010.08		2011.04	2012.01			2012.11
License Codeword Version			<u>v2.7</u> , v2.8, v2.9	<u>v2.8</u> , v2.9, v3.0	<u>v2.8</u> , v2.9, v3.0	<u>v2.8</u> , v2.9, v3.0		<u>v2.9</u> , v3.0, v3.1	<u>v2.9</u> , v3.0, v3.1			<u>v3.0</u> , v3.1, v3.2
MBP												2012.07
License Codeword Version												<u>v3.0</u> , v3.1, v3.2
MQA												2012.07
License Codeword Version												<u>v3.0</u> , v3.1, v3.2
AMA												2012.07
License Codeword Version												<u>v3.0</u> , v3.1, v3.2

Legend	Description
<u>vx.x</u>	indicates the base codeword version for a release
vx.x	indicates the codeword version that will be supported in future when available

FlexNet Version

FlexNet has its own release version compatibility rule that must be followed to ensure proper licensing behavior. Following are a few basic compatibility rules:

1. **Imgrd** version must be greater than or equal to vendor daemon (**agileesofd**) version.
2. Vendor daemon (**agileesofd**) version must be greater than or equal to the software applications.

Refer to [FlexNet Publisher's License Administration Guide](#) for further details.

Setting Up Licenses on Windows

This section describes how to set up a **node-locked license** or a **floating (network) license** on Windows.

i Both node-locked and floating licenses require **license server** to get installed and started. For a node-locked license, license server and the client machine are the same machine (that is, your local machine). For a floating license, these can be separate machines.

Contents

- *Node-locked License* (license)
- *Floating (Network) License* (license)

Setting Up Floating Licenses on Windows

Setting up floating licenses on Windows is a two-step process where both server-side setup and client-side setup are needed.

Step 1: Server-side setup

Repeat the following steps for each license server you have.

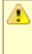
- For licenses tied to a CPU ID, follow the steps 1 and 2 described in the *Setting up Node-locked License on Windows (license)* section.
- For licenses tied to a USB Dongle, follow steps 1 through 3 described in the *Setting up Node-locked License on Windows (license)* section.

Step 2: Client-side setup

Once the license is configured successfully for all the license servers, configure each client computer to point to the network license server. **License Setup Wizard** offers the easiest method to get this done. Alternatively, you can perform this step manually by following step 3 of *Setting up Node-locked License on Windows (license)* section. Make sure to specify the network license server in the format of `port@host.domain`.

Example

`27001@myServer.myCompany.com`

 In case a license server is down or is running slow, it is recommended to remove it from the server list using the **License Setup Wizard** to avoid any performance degradation caused by the dead/slow servers.

Setting Up Node-locked License on Windows

On Windows, the **License Setup Wizard** offers the easiest way to set up your **node-locked license**. We strongly recommend you to use the **License Setup Wizard**, especially when you have multiple Agilent EEsof products installed on one computer. For more information, refer to *Quick Install-Windows* (qinstall). This section describes how to set up a node-locked license manually, should you decide not to use the **License Setup Wizard**.

Important
Do not perform manual setup steps with the **License Setup Wizard**. Choose one method or the other. **License Setup Wizard** may not be able to replace what you set up manually due to Administrator Privilege differences.

Manual Setup Instructions for a Node-locked License

The following instructions assume that you have already installed [Agilent EEsof Licensing Tools](#) in *C:\Program Files\Agilent\EEsof_License_Tools* folder. In case you have not yet installed the tools, run the Agilent EEsof Licensing Tools installer on the machine to which the license is tied to.

Warning Make sure to save the license file on the same machine where you install the Agilent software.

- [License tied to a CPU ID](#)
- [License tied to a USB Dongle](#)

License tied to a CPU ID

The following 3-step process shows how to manually set up a counted license that is tied to a CPU ID.

Step 1: Start License Server Managers

Start the FlexNet license server managers (**lmgrd** and **agileesofd**) on the computer to which the license is tied as follows:

1. Open the MS-DOS command prompt and change directory to the following path:
C:\Program Files\Agilent\EEsof_License_Tools\bin.
2. Specify the full path and location of the license file and the license log file, respectively, by typing the following command:
`lmgrd.exe -c <license file path> -l <license log file path>`
where,
 - <license file path> specifies one or more full path-names to the license file(s).
 - <license log file path> is the full path-name to the debug log file.

Info The spaces in path-names requires double quotes around the path-names.

Example

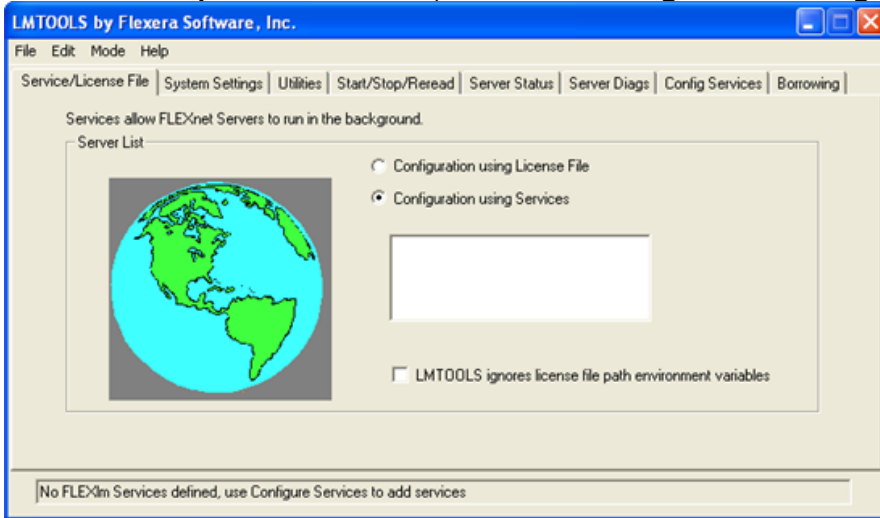
```
lmgrd.exe -c "C:\Program
Files\Agilent\EEsof_License_Tools\licenses\license.lic" -l "C:\Program
Files\Agilent\EEsof_License_Tools\my_server_log.txt"
```

Step 2: Create Windows Service

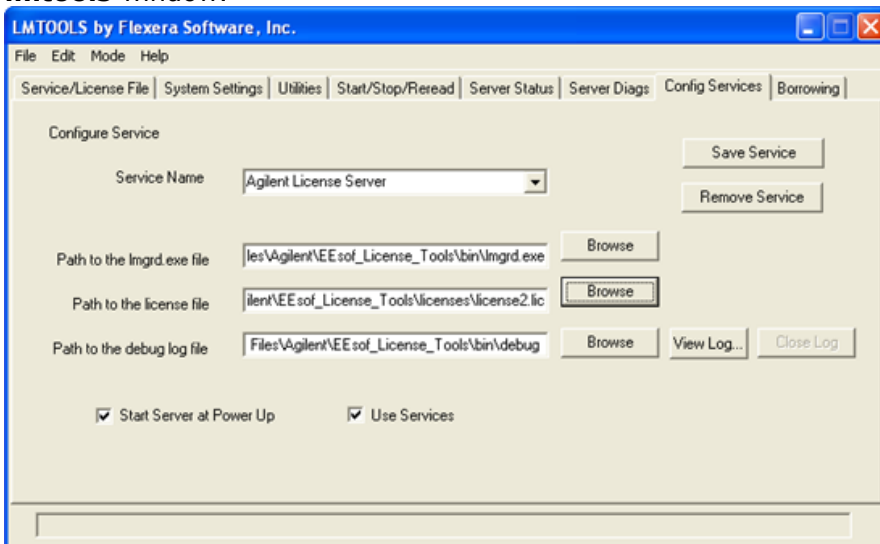
To automate the restart of the license server managers upon PC reboot, configure a Windows Service as follows:

i You must have Administrator Privileges to configure a Windows Service. The service will run under the Local System account.


1. Run the **lmtools.exe** from *C:\Program Files\Agilent\EEsof_License_Tools\bin*. The **lmtools** utility window is displayed.
2. In the **Service/License File** tab, select the **Configuration using Services** option.



3. Click the **Config Services** tab and enter the following details:
 1. **Service Name:** Type the service name (for example, *EEsof EDA License Server*).
 2. **Path to the lmgrd.exe file:** Click **Browse** and specify the path to the *lmgrd.exe* file on the license server (for example, *C:\Program Files\Agilent\EEsof_License_Tools\bin\lmgrd.exe*).
 3. **Path to the license file:** Click **Browse** and specify the path to the license file on license server (for example, *C:\Program Files\Agilent\EEsof_License_Tools\licenses\license.lic*).
If you have multiple license files for serving multiple Agilent EEsof products, you should include them all.
 4. **Path to the debug log file:** Click **Browse** and specify the path to the debug log file on license server (for example, *C:\Program Files\Agilent\EEsof_License_Tools\my_server_log.txt*).
4. Select the **Use Services** option.
5. Select the **Start Server at Power Up** option.
6. Click **Save Service**. The following figure shows the configured services in the **lmtools** window.



7. To verify that the service is created, click the **Start/Stop/Reread** tab and observe that your service shows up in the **FlexNet license services installed on this computer** list.

 **Troubleshooting Tip**
To verify if the license managers are running, click again on the **Config Services** tab later and click **View Log**. A log window appears that confirms whether **Imgrd** and **agileesofd** are up and running.


Step 3: Set Product Environment Variable

Set the environment variable `<PRODUCT>_LICENSE_FILE` to point the machine running the license server managers (**Imgrd** and **agileesofd**).

1. Select **Start > Control Panel > System**. Click **Advanced system settings**. The **System Properties** dialog box appears and the **Advanced** tab is selected by default).
2. Click **Environment Variables**.
3. In the **Environment Variables** dialog box, add the product specific environment variable `<PRODUCT>_LICENSE_FILE` as a new system variable. For example, for ADS, it is **ADS_LICENSE_FILE**, for EMPro, it is **EMPRO_LICENSE_FILE** and so on. For details, refer to *License Environment Variables* (license) section.
4. In the **New System Variable** dialog box, set the value to be the same as what you specified in the `-c` argument when you start **Imgrd**. To use the example illustrated in [Step 1](#), second bullet, this value would be `C:\Program Files\Agilent\EEsof_License_Tools\licenses\license.lic`.
5. Repeat 3 and 4 for each Agilent EEsof product you have installed on your computer.

License tied to USB Dongle

The following 4-step process shows how to manually set up a counted license that is tied to a USB dongle.

 You can move a dongle between systems after performing this license setup process for each computer you intend to run Agilent EEsof product(s) using the dongle license(s). If multiple dongles are swapped from one computer to another, be sure to include all the licenses associated with those dongles during the setup process.


Step 1: Attach Dongle

Make sure that the dongle is securely attached to the USB port of your computer. Some systems may require up-to a few minutes to detect the dongle, therefore, make sure to keep sufficient time before the next step.

Step 2: Install USB Dongle Drivers

The USB Dongle drivers need to be installed once on each computer that is intended to run Agilent EEsof product(s) with dongle license(s).

The USB dongle drivers can be found under the license installation tree. To install the drivers, run the **FLEXid_Dongle_Driver_Installer.exe** from `C:\Program Files\Agilent\EEsof_License_Tools\bin`. You may be required to restart your local machine after the installation is complete.

 If you are using Wibu Key Dongle, make sure to select the **FLEXid 10 Drivers** option.

Step 3: Start License Server Manager and Create Windows Service

Licensing (For Administrators)

Follow the steps 1 and 2 described in the [License tied to CPU ID](#) section.

Step 4: Set Product Environment Variable

Follow the step 3 described in the [License tied to CPU ID](#) section.

Setting Up Licenses on Linux and Solaris

This section describes how to set up a node-locked license or a floating (network) license on Linux and Solaris.

i Both node-locked and floating licenses require [license server](#) to get installed and started. For a node-locked license, license server and the client machine are the same machine (that is, your local machine). For a floating license, these can be separate machines.

Contents

- *Node-locked License* (license)
- *Floating (Network) License* (license)

Setting Up Floating Licenses on Linux and Solaris

Setting up floating license on Linux or Solaris is a two-step process where both server-side setup and client-side setup are needed.

Step1: Server-side setup

Repeat the following steps for each license server you have.

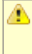
- For licenses tied to a CPU ID, follow the steps 1 and 2 described in *Setting up Node-locked Licenses on Linux and Solaris* (license) section.
- For licenses tied to a USB Dongle, follow steps 1 through 3 described in *Setting up Node-locked Licenses on Linux and Solaris* (license) section.

Step 2: Client-side setup

Once the license is configured successfully for all the license servers, configure each client computer to point to the network license server. **License Setup Wizard** offers the easiest method to get this done. Alternatively, you can perform this step manually by following step 3 of *Setting up Node-locked License on Linux and Solaris* (license) section. Make sure to specify the network license server in the format of `port@host.domain`.

Example

`27001@myServer.myCompany.com`

 In case a license server is down or is running slow, it is recommended to remove it from the server list using the **License Setup Wizard** to avoid any performance degradation caused by the dead/slow servers.

Setting Up Node-locked License on Linux and Solaris

This section describes how to set up a node-locked license on Linux and Solaris. In case of multiple Agilent EEsof Products,

Important
Agilent EEsof products no longer run on the Solaris platform; however we still support Solaris as the license server system.

License Setup Instructions for a Node-locked License

The following instructions assume that you have already installed [Agilent EEsof Licensing Tools](#) either in the EEsof product installation tree, or in a dedicated location. The former happens automatically when you install Agilent EEsof product on the Linux platform; the latter happens when you separately download the Agilent EEsof Licensing Tools from Agilent download website and install the package to a dedicated location. In the former case, you can find all the licensing tools and binaries under `<PRODUCT_INSTALL_DIR>/Licensing/2012.08/linux_x86_[32|64]/bin` directory. In the latter case, you can find all the licensing tools and binaries in the `<LIC_INSTALL_DIR>/bin` directory. For convenience, `<LIC_PATH>` is used in the rest of this chapter to represent the directory where the licensing libraries and executables are located.

Warning Make sure to save the license file on the same machine where you install the Agilent software.

- [License tied to a CPU ID](#)
- [License tied to a USB Dongle](#)

License tied to CPU ID

The following 3-step process shows how to manually set up a counted license that is tied to a CPU ID.

Step 1: Start License Server Managers (*lmgrd* and *agileesofd*)

Start the license server managers (*lmgrd* and *agileesofd*) on the machine to which the license is tied as follows:

1. Change the directory to the `<LIC_PATH>`
2. Run the following command to start `lmgrd`:

```
./lmgrd -c <license file path> -l <license log file path>
```

 where,
 - `<license file path>` specifies one or more full path-names to the license file(s).
 - `<license log file path>` is the full path-name to the debug log file.


Step 2: Automate FlexNet License Server Startup

To automate the License Server managers' startup upon system reboot, add something similar to the following sample script in the system boot services directory or **`/etc/rc.d/init.d`**.

```
#!/bin/sh
#
# Sample FlexNet startup script for restarting EEsof License Server
#
### BEGIN INIT INFO
```

Licensing (For Administrators)

```
# Provides: eesof license server
# Required-Start: $network
# Required-Stop:
# Default-Start: 3 4 5
# Default-Stop:
# Description: Start EEsof License Server
### END INIT INFO
PATH=/bin:/usr/bin
export PATH
#
# Under the following example licensing invoking line, change /opt/ADS to the path of your license
installation directory
#
su licadmin -c "/opt/ADS/Licensing/2012.08/linux_x86_64/lmgrd -c /opt/ADS/Licenses/license.lic -l
/opt/ADS/Licenses/ads_server_log.txt"
echo "Starting Agilent EEsof FlexNet license daemon....."
sleep 5
```

 All the references to `/opt/ADS/...` shown above should be replaced with the actual path of `<LIC_PATH>`.

Once you implement your version of the FlexNet startup script using the above sample, follow the steps below to complete the automation:

1. Change to the system boot services directory: `/etc/rc.d/init.d`
2. Create a startup script in the system boot services directory: `EEsof_lmgrd_restart`
3. Insert your FlexNet startup script into this script.
4. Set the permissions for this script, as shown:

```
chmod 755 EEsof_lmgrd_restart
chown root EEsof_lmgrd_restart
chgrp sys EEsof_lmgrd_restart
```

5. For license servers, run the command: `/sbin/chkconfig --add EEsof_lmgrd_restart`

Step 3: Set Product Environment Variable

Set the product specific environment variable `<PRODUCT>_LICENSE_FILE` to point to the machine running the license server managers (*lmgrd* and *agileesofd*). For example, for ADS, it is **`ADS_LICENSE_FILE`**, for GoldenGate, it is **`GOLDENGATE_LICENSE_FILE`** and so on. For details, refer to *License Environment Variables* (license) section.

This environment variable can be set in the user login startup file such as `.cshrc` (for C shell) or `.profile` (for Bourne shell) in the `$HOME` directory. Alternatively, these variables can be set using command-line as well.

csh, tcsh, cshrc command for setting `<PRODUCT>_LICENSE_FILE`

```
setenv <PRODUCT>_LICENSE_FILE <license file pathname>
```

Example Product=ADS

```
setenv ADS_LICENSE_FILE $HOME/Agilent/Licenses/license.lic
```

ksh, bash command for setting `<PRODUCT>_LICENSE_FILE`

```
export <PRODUCT>_LICENSE_FILE=<license file pathname>
```

Example Product=GoldenGate

```
export GOLDENGATE_LICENSE_FILE=$HOME/Agilent/Licenses/license.lic
```

Repeat this step for each Agilent EEsof product you have installed on your Linux computer.

i To use multiple Agilent EEsof Products at the same time, setup the license by merging license files for each product and starting up the License Server Managers as described in [step 1](#).

License tied to USB Dongle

Dongles are only supported for the Linux platform; they are not supported on the Solaris platform. For the Linux platform, the following 4-step process shows how to manually set up a counted license tied to a USB dongle.

i You can move a dongle between systems after performing this license setup process for each computer you intend to run Agilent EEsof product(s) using the dongle license(s). If multiple dongles are swapped from one computer to another, make sure to include all the licenses associated with those dongles during the setup process.

Step 1: Attach Dongle

Make sure that the dongle is securely attached to the USB port of your computer. Some systems may require up-to a few minutes to detect the dongle, therefore, make sure to keep sufficient time before the next step.

✓ You can move a dongle between systems by placing a copy of its associated license file on each system and moving the USB dongle from one system to another. Each system must have the license(s) setup for use.

Step 2: Install USB Dongle Drivers

The USB Dongle drivers need to be installed once on each computer that is intended to run Agilent EEsof product(s) with dongle license(s). By default, the USB dongle drivers are bundled with the product installation files. They are available in the `dongle_sup` directory once you **untar** the installation image.

To install these drivers on your local machine, follow these steps with the appropriate drivers from the table below:

1. Disconnect the USB dongle from your local machine.
2. Change directory to `dongle_sup` under the directory you want to **untar** the installation image to.
3. Use the Red Hat Package Manager (RPM) to install the drivers. For example, to install 64-bit Flex-10 Wibu dongle driver, execute the following command:

```
rpm -i WkRt-Lin64-6.0.501-1.x86_64.rpm
```

The following table shows all available dongle drivers being packaged in the installation image.

Operating System	Device Manufacturer	FLEXID	Driver Installation File
Red Hat® Linux 32-bit	Aladdin Knowledge Systems	9	aksusbd-redhat-1.8.1-3.i386.rpm
Red Hat® Linux 32-bit	Wibu Systems AG	10	WkRt-Lin-6.0.501-1.i386.rpm
Red Hat® Linux 64-bit	Aladdin Knowledge Systems	9	aksusbd-redhat-1.14-3.i386.rpm
Red Hat® Linux 64-bit	Wibu Systems AG	10	WkRt-Lin64-6.0.501-1.x86_64.rpm
SUSE® Linux 32-bit	Aladdin Knowledge Systems	9	aksusbd-suse-1.8.1-3.i386.rpm
SUSE® Linux 32-bit	Wibu Systems AG	10	WkRt-Lin-6.0.501-1.i386.rpm
SUSE® Linux 64-bit	Aladdin Knowledge Systems	9	aksusbd-suse-1.14-3.i386.rpm
SUSE® Linux 64-bit	Wibu Systems AG	10	WkRt-Lin64-6.0.501-1.x86_64.rpm

4. Connect the USB dongle again to your local machine.
5. Open command prompt, change directory to `<LIC_PATH>`, and type these commands to check if the FlexNet ID of the USB dongle is correct.

Imutil Imhostid -flexid

Step 3: Start License Server Manager and Automate License Server Manager Restart

Follow the steps 1 and 2 described in [License tied to CPU ID](#) section.

Step 4: Set Product Environment Variable

Follow the step 3 described in [License tied to CPU ID](#) section.

See Also

Understand Your License File (license)

Recognize License Type (license)

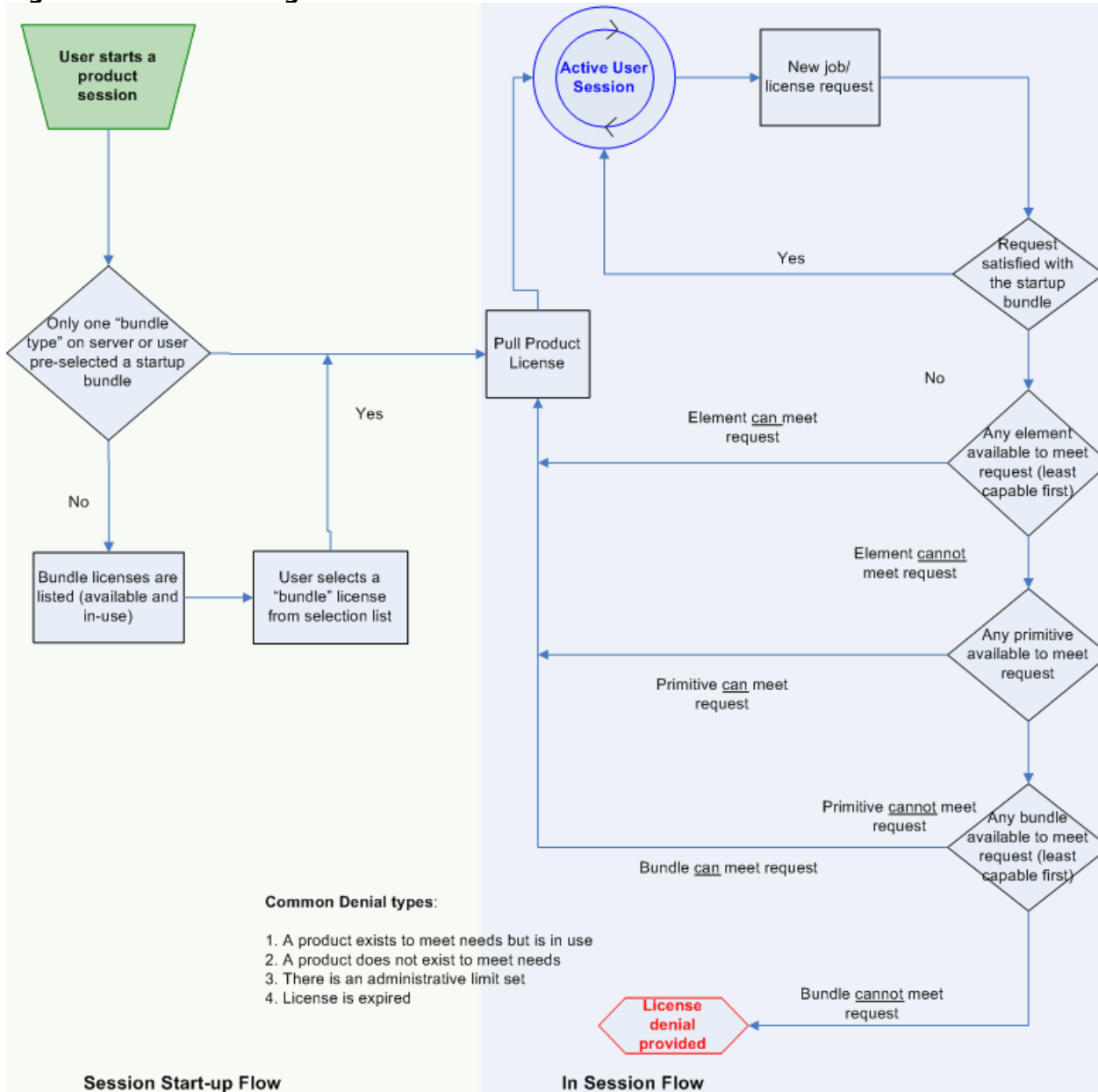
[License Troubleshooting](#)

Licensing Behavior

This section outlines the Agilent EEsof licensing behavior at the start-up of a product session, as well as during an active session.

i Licensing **Hot Swapping** is not supported by Agilent EEsof Licensing scheme.

Figure: EEsof Licensing Behavior



Session Start-up Flow

While initiating an Agilent EEsof product session, if only one type of a **bundle** license is available on the license server, it is checked out and the software session starts immediately. However, if there are multiple bundle types to choose from, the **Product Selector** window is displayed, which allows the user to choose the most appropriate license to start with. You can preselect a license as the default for future sessions. To do so, in the **Product Selector** dialog box, select the license and check **Always try to start with this selection** option. Once checked, new start-up will automatically attempt to check-out the preselected license without displaying **Product Selector** in subsequent

sessions. If the pre-selected license is denied, and more than one license is available to start the software, then **Product Selector** dialog box will be displayed once again.

For more details on **Product Selector**, refer to the *Product Selector (license)* section.

i CAD administrators can assign a startup bundle for a user and/or suppress the **Product Selector** from appearing by using the following environment variables:

- <PRODUCT>_PRODSEL_AUTOSTART
- <PRODUCT>_PRODSEL_PREVIOUS

Refer to *License Environment Variables (license)* section for more details.

Active or In-Session Flow

Once the start-up license is checked out, all subsequent license requests follow the logic depicted in the diagram above. In a nutshell, the start-up license is always attempted first; if fails, **Elements**, Primitives, and Bundles are attempted in that order; also, within each group, the least capable is attempted before the more capable ones.

i FlexNet provides additional controls, such as EXCLUDE, MAXIMUM, for the CAD Administrators to limit the license usage. For details, refer to the [FlexNet Publisher's License Administration Guide](#).

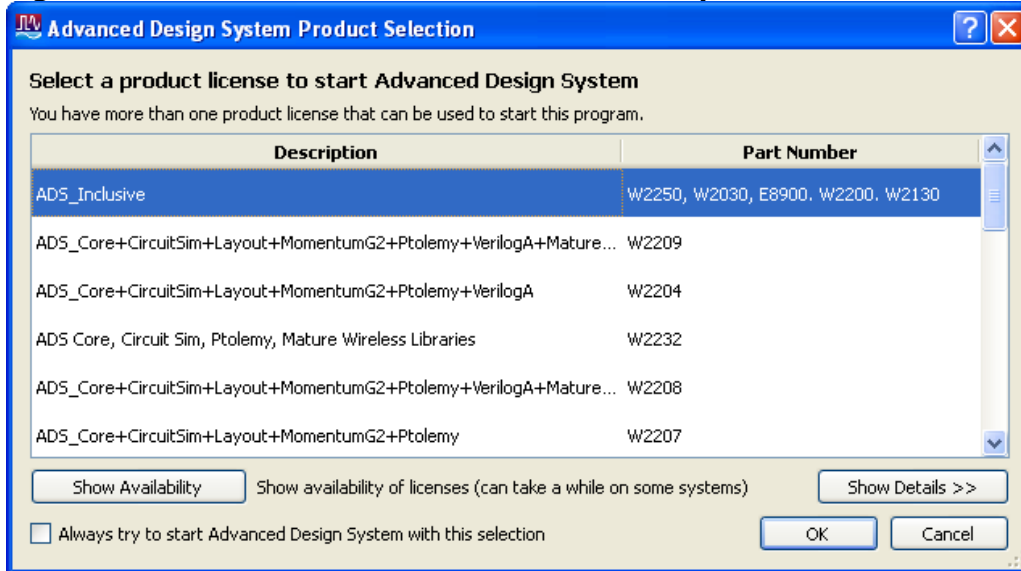
See Also

Product Selector (license)

Product Selector

The **Product Selector** displays a list of licenses that can be used to start an Agilent EEsof software. The **Product Selector** dialog box only appears if multiple licenses are available to start and Agilent EEsof software. It does not appear if there is only one license present, or if you have already preselected a startup license previously and that license is available. You can select a license from the list, as illustrated.

Figure: Product=ADS Product Selector for Example



Using Product Selector

You can use **Product Selector** to perform the following tasks:



- [View License Description and Part Number](#)
- [Check License Availability](#)
- [Select Product License](#)
- [Change Default Startup License](#)

View License Description and Part Number

The **Product Selector** window displays all the licenses that can start the software of interest like ADS.

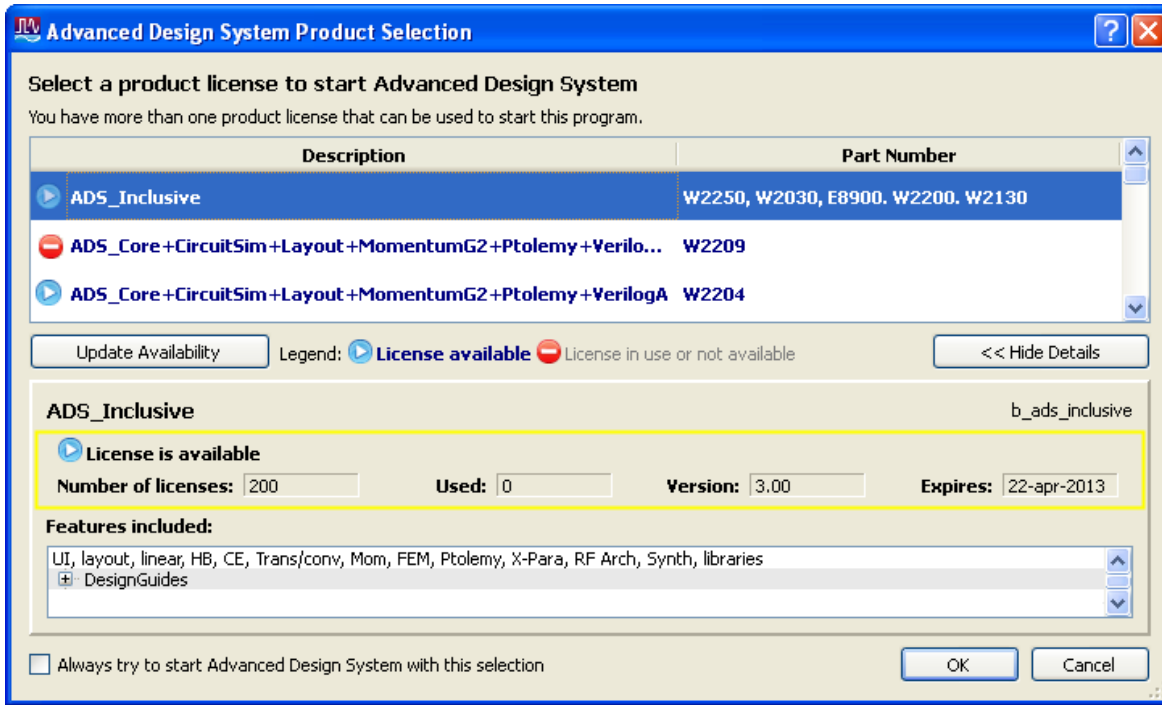
Check License Availability

To check if the selected license is available on the server, click **Show Availability**. The availability of each license is displayed with the following convention:

 denotes that the license is available for use, while  shows that the license is unavailable. Unavailable licenses cannot be selected.

To view the details of the available license, select the license and click **Show Details**. The bottom pane appears and displays the following information: number of licenses, licenses used, license version, and license expiry date, .., and so on.

Figure: Product=ADS Product Selector for Example



Select Product License

You can select an available license in **Product Selector** to start the software. Only one license can be selected at a given time.

You can assign pre-selected license as a default choice for future sessions. This license is used automatically whenever a new session invoked. To pre-select a startup license, select the pre-selected license and check **Always try to start with this selection**. Once checked, in subsequent sessions, software startup will automatically attempt to check out the pre-selected license without displaying **Product Selector**. If the pre-selected license is denied and more than one license are available to start the session, then the **Product Selector** dialog box will be displayed once again.

Change Default Startup License

You can change the default startup license by using the *License Manager* (license). Launch the **License Manager** tool and select **Change the default product license**. Upon which the **Product Selector** is displayed. Either uncheck the **Always try to start with this selection** option to reset the default to None, or simply select another license as the new default.

See Also

License Manager (license)
Licensing Behavior (license)

Licensing Tools

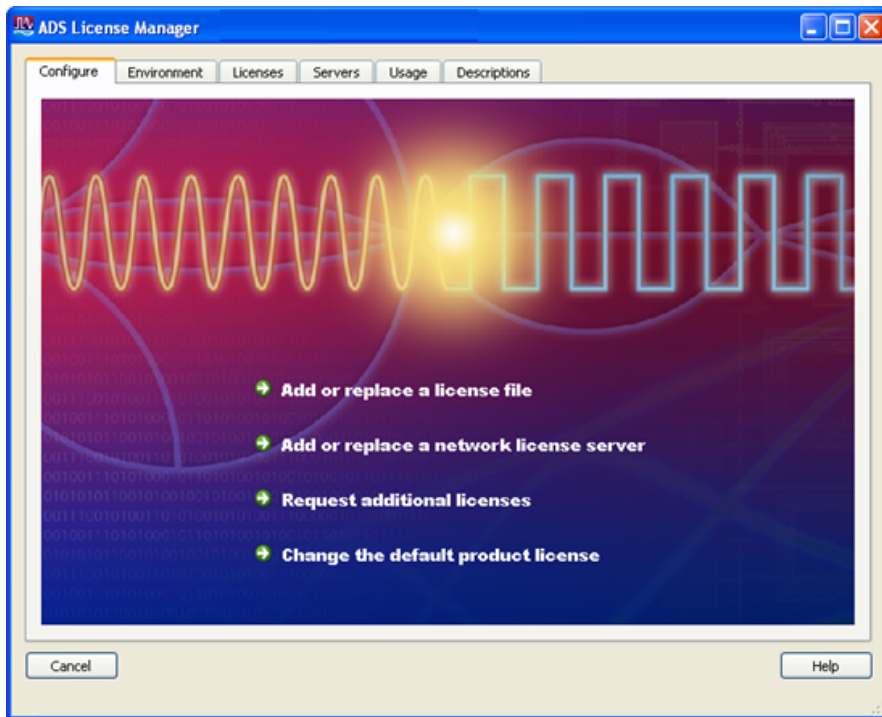
Agilent EEsof Licensing comes with several tools to help you manage EEsof licenses:

- *License Manager* (license)
- *Product Selector* (license)
- License Setup Wizard

License Manager

The **License Manager** has been introduced in the Product releases starting October 2012. It is one-stop shop for all licensing tools.

Figure: Product=ADS License Manager for Example



It provides an interface to:

- Configure Licenses, such as add or replace a license file, add or replace a network license server, request for additional licenses, and change the default product startup license.
- Show Environment Variables related to licensing. Your computer host name, IP address, FlexNet version are some of the examples.
- Identify all the license features found in your license setup. Codeword version, number of features used, expiration date are presented as well.
- List all the license servers set up in your configuration.
- Provide information about bundles and elements that are available or in use. You can sort the usage by the codewords or by Users.
- Describe what capabilities are enabled by each license in your licensing pool.

The **License Manager** can be accessed from the Product **Main Window** as follows:
Tools > License Manager.

Advanced Licensing Configuration Options

This section provides information on various advanced licensing configuration options.

- *Accessing Licenses through a Firewall* (license)
- *Creating Options File* (license)
- *License Environment Variables* (license)
- *Multiple Server Configurations* (license)
- *Remote and Distributed Simulation Licenses* (license)

Accessing Licenses through a Firewall

You can checkout FlexNet licenses through a firewall (or router) as per your license agreement. To enable license checkout, configure your firewall to allow TCP/IP communication through the TCP ports used by the license manager daemon (**lmgrd**) or vendor daemon (**agileesofd**).

Step 1. Specify TCP Port Numbers

Specify a TCP port number for **lmgrd** on the `SERVER` line and for **agileesofd** on the `VENDOR` lines. Be sure to stop and restart the license servers after you modify the port numbers.

Example

```
<font="monospace">SERVER myserver 00809AC7123F8 27000
VENDOR agileesofd c:\apps\flexnet\vendors\agileesofd port=1705
```

Step 2. Configure Firewall


[Configure your firewall \(or router\)](#) to allow TCP communication through the TCP ports you specified in Step 1.

Step 3. Set Environment Variable

At the client-side, set the `<PRODUCT>_LICENSE_FILE` environment variable to the port number assigned to the license server, as shown:

```
<PRODUCT>_LICENSE_FILE=27000@myserver.myDomain
```

After you set the environment variable, clients outside of the firewall will be able to access licenses from your server.

 Some clients may timeout before they can connect to a license server through a firewall setup on Windows. The default timeout period is 0.1 second. If you need a longer timeout period, you can modify FlexNet environment variable `FLEXLM_TIMEOUT` to a larger value. Refer to [FlexNet Publisher's License Administrator Guide](#) for details

Creating Options File

An **Options** file allows administrators to control the following licensing parameters of FlexNet:

- Restricts and/or reserves the use of features based on user, hostname, or display name.
- Controls the level of information logged about license usage.



- You can create an **Options** file using any text editor.
- Ideally, you should keep this file in the same directory as your license file.

For details on how to create an Options file, refer to the [FlexNet Publisher's License Administration Guide](#) .

Agilent EEsof Specific Licensing Environment Variables

This section describes the environment variables specific to Agilent EEsof licensing scheme. At most two locations are used to resolve these environment variables, and in the order shown below:

1. System Environment for the user
2. Unified License Configuration Location:

Operating System	Key Name
Windows XP/7	HKEY_CURRENT_USER\Software\Agilent\EEsof License Configuration
Unix	\$HOME/.eesoflic

Licensing (For Administrators)

Variable Name	Description
<PRODUCT>_LICENSE_FILE	<p>Specifies the list of license files/servers to search when a license is requested by a given Agilent EEsof Software.</p> <p>Each Agilent EEsof software has a dedicated variable to serve this purpose:</p> <ul style="list-style-type: none"> • ADS_LICENSE_FILE • ICCAP_LICENSE_FILE • EMPRO_LICENSE_FILE • GENESYS_LICENSE_FILE • SYSTEMVUE_LICENSE_FILE • GOLDENGATE_LICENSE_FILE • AMA_LICENSE_FILE • MBP_LICENSE_FILE • MQA_LICENSE_FILE <p>It is automatically set by the License Setup Wizard. The license file path must not contain any special characters like , @ and semicolon(:) on Window or a colon(:) on Linux.</p> <p>These are used as separator characters.</p>
EESOF_INSTALL_SKIP_LICSETUP	<p>This environmental variable gives the CAD administrators the ability to turn off the License Setup Wizard invocation at the end of Agilent EEsof product installation process.</p> <p>Set this variable to on or 1 to turn off the wizard invocation.</p>
<PRODUCT>_PRODSEL_PREVIOUS	<p>Product Selector automatically records the name of the license selected to start the software session in this variable. This variable can be used in conjunction with <PRODUCT>_PRODSEL_AUTOSTART variable to pre-select a license as the default startup license; when the pre-selected license is available at the startup of the next software session, the Product Selector dialog box does not get displayed.</p>
<PRODUCT>_PRODSEL_AUTOSTART	<p>It automatically records the state of the check-box "Always try to start with this selection."</p> <p>It is set to TRUE when check-box is checked. This variable can be used in conjunction with <PRODUCT>_PRODSEL_PREVIOUS variable to pre-select a license as the default startup license. When this variable is set to a value other than 0 or FALSE,</p> <p>the value recorded in <PRODUCT>_PRODSEL_PREVIOUS is used automatically when a new software session is started. In case, where there is only one license in the licensing pool qualified to start the new session, this variable has no effect; in all the other cases, if no <PRODUCT>_PRODSEL_PREVIOUS is specified or if the new session cannot be started with the specified license, the Production Selector dialog will be displayed.</p>
AGILEESOFD_DEBUG_MODE	<p>Turns on the debug mode in vendor daemon by setting this variable to full. Since this variable is only read at server startup, you need to stop and restart the license server managers to allow this setting to take effect. Alternatively, you can turn on vendor daemon without having to stop and restart the license server managers. To do so, follow these steps:</p> <ol style="list-style-type: none"> 1. <code>cd <LIC_PATH></code> 2. <code>agimutil -c @myServer.myDomain <cr></code> 3. <code>ds_schematic <cr></code> 4. <code>-vdump <cr></code>
HPEESOF_DEBUG_MODE	<p>Controls the client-side licensing debug mode. Any value other than OFF turns on the client-level debugging.</p> <p>Debug messages are written to <code>stderr</code> unless <code>AGLM_DEBUG_LOG</code> is set.</p> <p>This value should be set before you start the Agilent EEsof software of interest.</p>
AGLM_DEBUG_LOG	<p>Sets the name of the client-side licensing debug log file.</p> <p>This should be used in conjunction with <code>HPEESOF_DEBUG_MODE</code> variable.</p>
AGLMERR	<p>Suppresses error and warning messages. The value is a list of keywords.</p> <p>If any of the keywords appear in the error message, the license denial popup message is suppressed.</p>

Multiple Server Configurations

Agilent EEsof licensing scheme supports all the popular server configurations supported by FlexNet. This includes the redundant servers as well as the multiple servers. Refer to the [FlexNet Publisher's License Administration Guide](#) for details.

Remote and Distributed Simulation Licenses

Agilent EEsof supports remote and distributed simulations for Circuit and Momentum Simulators. Remote simulation requires a floating license in the licensing pool; the distributed simulations, usually run remotely, requires special distributed licenses.

Remote Simulation Licenses

Where supported by the product, a floating simulation license is used to run a single simulation on a remote machine.

For more details on Remote Simulations for:

- ADS Circuit Remote Simulation, see [Circuit Remote Simulation](#)
- ADS Transient, Convolution Simulation, see [Transient and Convolution Simulation](#)
- ADS Momentum Remote Simulation, see [Using the Job Manager](#)
- GG Circuit Remote Simulation, see [Remote Simulation](#)

Distributed Simulation Licenses

Distributed simulation allows you to run multiple simulation jobs in parallel usually on multiple machines remotely. Simulation Manager is used to launch distributed simulations for Transient, Convolution, S-Parameters and Channel Simulators along with Batch Simulators in ADS and circuit Simulators in GoldenGate (GG). Job Manager is used to run distributed simulations for Momentum in ADS and GG.

Following types of Distributed Simulation licenses are offered:

- [Distributed Computing N-pack Simulation License](#)
- [Quad-pack Simulation License \(GoldenGate Only\)](#)

Distributed Computing N-pack Simulation License

Where supported, Agilent EEsof offers distributed N-pack (or Turbo) licenses to support a cost-effective method to accelerate simulation sweeps, where N is the number of concurrent parallel jobs supported (typically, $N = 8$). This is a reserve license up-front model in which simulation controller reserves simulation licenses up-front and only launches as many simulation jobs as granted.

A distributed N-pack license supports N parallel simulation jobs which perform a sweep of multiple parameters on a single circuit (like frequency, power, temperature, a variable, Monte Carlo, or corner analysis).

A standard simulation license is checked out first before an N-pack distributed license. The standard license acts as a controller. If you require more than N sweep points to be simulated, multiple count of N-pack licenses can be stacked to accommodate greater parallelism.

A distributed computing N-pack license is limited to the same simulation type (that is, Momentum, Transient, and so on).

A distributed computing N-pack license feature bits are bundled together and cannot be shared between users or different circuits.

In case of a Distributed Computing N-pack Simulation license, the N-pack license is checked out at the initiation of a distributed simulation (if available) and is released only once the sweep jobs are complete. As jobs are completed the license is still reserved to complete additional jobs, if needed on the existing sweep. This guarantees that the sweep is complete and also guarantees a reasonable rate of job acceleration. For example, you have only one count of 8-pack distributed license in the licensing pool and you want to distribute the sweep to 12 jobs. In this case, 8 jobs will start in parallel and as each job

finishes, the remaining jobs (4) will start automatically using the same 8-pack license.

In case, when no N-pack license is available, Momentum uses the standard license obtained and run simulations using all the sweeps are completed sequentially. On the other hand, in case of transient, convolution and channel simulator, multiple jobs are launched as per request and each job pulls the standard simulation license.

For more details on distributed simulation on:

- ADS Circuit Distributed Simulation, see [Distributed Simulation Using Simulation Manager](#)
- ADS EM Simulation, see [Using the Job Manager](#)

Quad-pack Simulation License (GoldenGate Only)

Quad-pack Simulation Licenses support 4 simultaneous simulation jobs of multiple types (transient, harmonic balance, circuit envelope tied to the license) which can be used to sweep multiple parameters of one or more circuits. The Quad-pack Simulation licenses do not require standard simulation licenses to be pulled first. This is a first-come, first serve licensing model, with all jobs launched at the same time having equal opportunity to have the licenses granted.

In contrast to Distributed Computing N-pack Simulation license, when a user requests for, say, 20 jobs, but only two counts of the quad-pack licenses are available. In that case, all 20 jobs are launched at once, but only 8 are granted with the quad-pack licenses and able to perform the simulations; the other 12 jobs wait until quad-pack license is released by the first 8 jobs, and each will start its simulation once granted with the license.

For more details on Distributed Simulations in case of GG, refer to [GG Circuit Distributed Simulation](#)

License Retry

All simulations launched remotely have the license auto-retry set for one-hour by default. Within that period, the previously failed license checkout request is attempted again in every 2 minutes, until either the license is granted, or the retry period times out.