

NOTICE: This document contains references to Agilent Technologies. Agilent's former Test and Measurement business has become Keysight Technologies. For more information, go to **www.keysight.com**.





Agilent Technologies

MBP 2011.2.0 *Release Notes*

MBP Support Team

Dec 2011

mbp_pdl-eesof@agilent.com



Agilent Technologies

OVERVIEW

- Engine Improvements
- Feature Improvements
- DCP Improvements
- Other Improvements and Issues Fixed

Engine Improvements

➤ CMC model support list

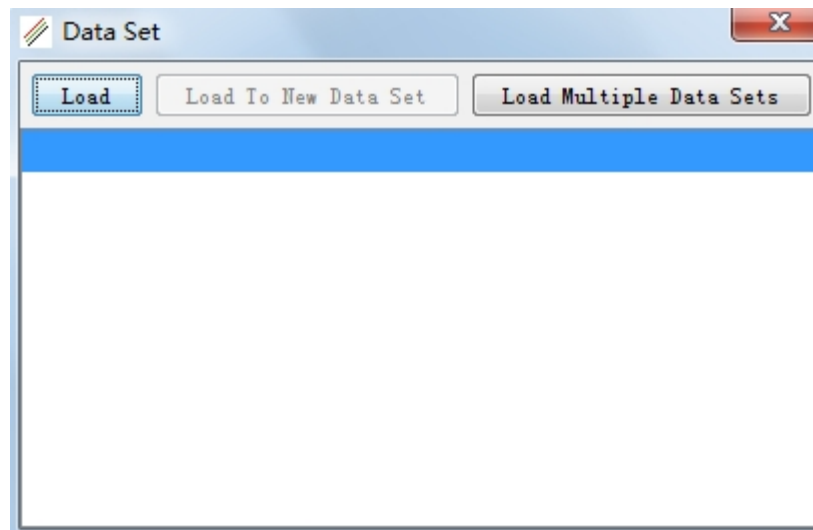
HiSim2	2.6, 2.51, 2.50, 2.43, 2.41, 2.40
HiSim_HV	1.22, 1.21, 1.2, 1.1.2, 1.1, 1.02
PSP	103.1.1, 103.0, 102.3.4
Bsim6	beta4-6
Bsim4	44.5, 0.7, 4.4.46, .46.,3 4.6.5, 4.6.4, 4.6.3, 4.6.2, 4.6.1
Bsim3v3	3.3, 3.2
BSIMSOI	4.4, 4.3, 4.2, 4.1, 4.0, 3.2
BSIM-IMG	101
BSIM-CMG	V105.02, 105.03
MEXTRAM	504.8
VBIC	1.2
HICUM	2.23
JUNCAP2	200.3.1
MOSVAR	1.1.0
R2/R3	1.0
Verilog-A LRM	2.3(partially)



Features Improvement

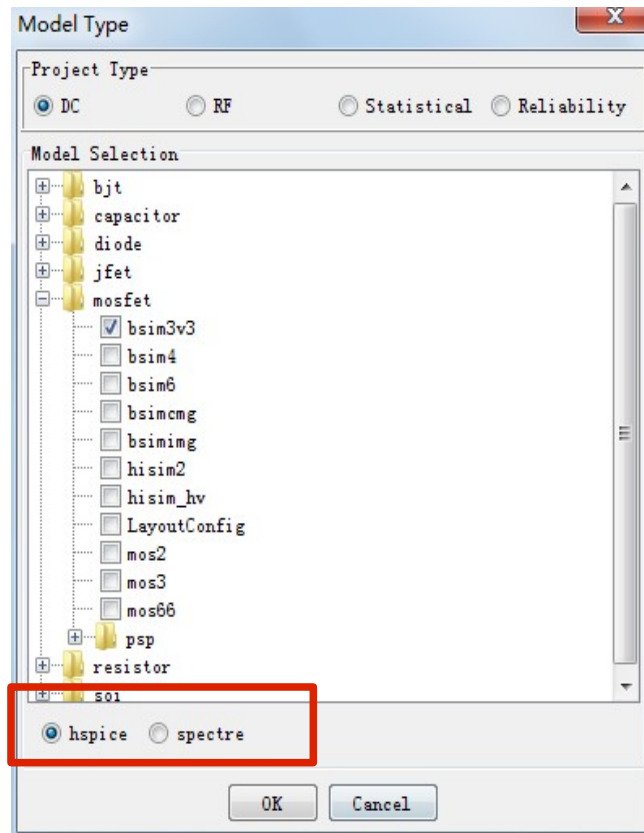
➤ Data Set

- Support to load multiple data set
- Put different data set to different folders, when MBP load these folders, all the data in the same folder is considered to be one data set



Features Improvement

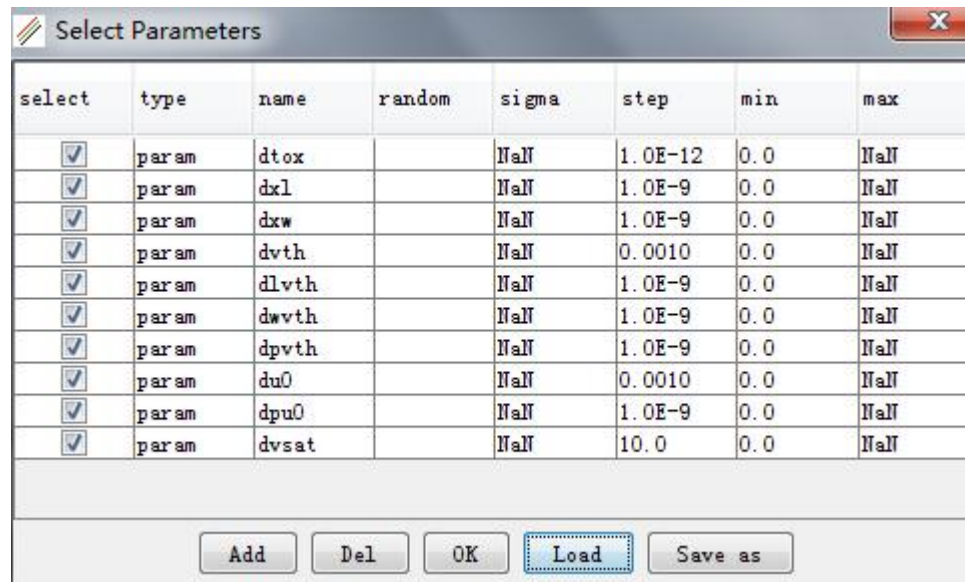
- Model type structure
 - Simulator type selection changed



Features Improvement

➤ Statistical and mismatch

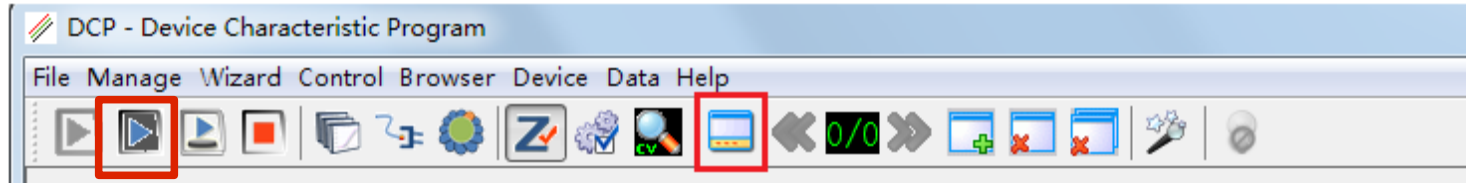
- Before running the extraction flow, MBP allows you to input parameter sigma, or random parameter name in the Select Parameters window.
- Add BJT auto-extraction flow



select	type	name	random	sigma	step	min	max
<input checked="" type="checkbox"/>	param	dtox		NaN	1.0E-12	0.0	NaN
<input checked="" type="checkbox"/>	param	dxl		NaN	1.0E-9	0.0	NaN
<input checked="" type="checkbox"/>	param	dxw		NaN	1.0E-9	0.0	NaN
<input checked="" type="checkbox"/>	param	dvth		NaN	0.0010	0.0	NaN
<input checked="" type="checkbox"/>	param	dlvth		NaN	1.0E-9	0.0	NaN
<input checked="" type="checkbox"/>	param	dvwth		NaN	1.0E-9	0.0	NaN
<input checked="" type="checkbox"/>	param	dpvth		NaN	1.0E-9	0.0	NaN
<input checked="" type="checkbox"/>	param	du0		NaN	0.0010	0.0	NaN
<input checked="" type="checkbox"/>	param	dpu0		NaN	1.0E-9	0.0	NaN
<input checked="" type="checkbox"/>	param	dvsat		NaN	10.0	0.0	NaN

DCP Improvements

- Add fold/unfold plot and message window button



- Add 'measure tile' function to measure selected tile
- Add 'copy' and 'rename' to target group
- Device table enhancement
 - New added device follows the setup of previous one
 - Add 'copy' to device and 'rename' to device and tile
 - DUT information is displayed on the top of the device window

Other Improvements

- Update Statistical/Mismatch/RF demo data.
 - Statistical/Mismatch: Add mean/sigma format
 - RF: Add magnitude/phase format (phase in degree)
- Update MOSVAR demo data
- Support BSIMCMG in Linux version
- Show simulation point in IMV when original data is NaN
- Support plot range change for IMV pages
- Show percentage in model tweaking error

Issues Fixed

- Fix IMV constant saving bug
- Fix IMV select point issue
- Fix capacitor Ig node bug
- Fix spectre mos diode simulation issue
- Fix binning model optimization issue
- Support 'sa0', 'sb0', 'dtoxcv'