

NOTICE: This document contains references to Agilent Technologies. Agilent's former Test and Measurement business has become Keysight Technologies. For more information, go to **[www.keysight.com](http://www.keysight.com)**.



# Quick Install and License Setup

**Author:** Greg Miller  
**Date:** Oct 21, 2012 11:53 PM  
**URL:** <http://edocs.soco.agilent.com/display/mbp2012/Quick+Install+and+License+Setup>

# Table of Contents

---

1	Quick Install and License Setup	3
2	MBP Quick Install and License Setup	4
2.1	MBP Quick Install and License Setup	4
2.1.1	Download	4
2.1.2	Install and Configure (Windows)	4
2.1.3	Install and Configure (Linux)	7

# 1 Quick Install and License Setup

---

- [MBP Quick Install and License Setup](#)

## 2 MBP Quick Install and License Setup

### On This Page

- [MBP Quick Install and License Setup](#)
  - [Download](#)
  - [Install and Configure \(Windows\)](#)
    - [Server Setup](#)
    - [Client Setup](#)
  - [Install and Configure \(Linux\)](#)
    - [Server Setup](#)
    - [Client Setup](#)

### Additional Resources

- [What's New](#)
- [Articles](#)
- [Knowledge Center](#)
- [Technical Support Contact](#)
- [Training](#)
- [Videos](#)

## 2.1 MBP Quick Install and License Setup

MBP can be installed on a PC running Windows or Linux by downloading the install file from the Agilent EEs of EDA Website.

### 2.1.1 Download

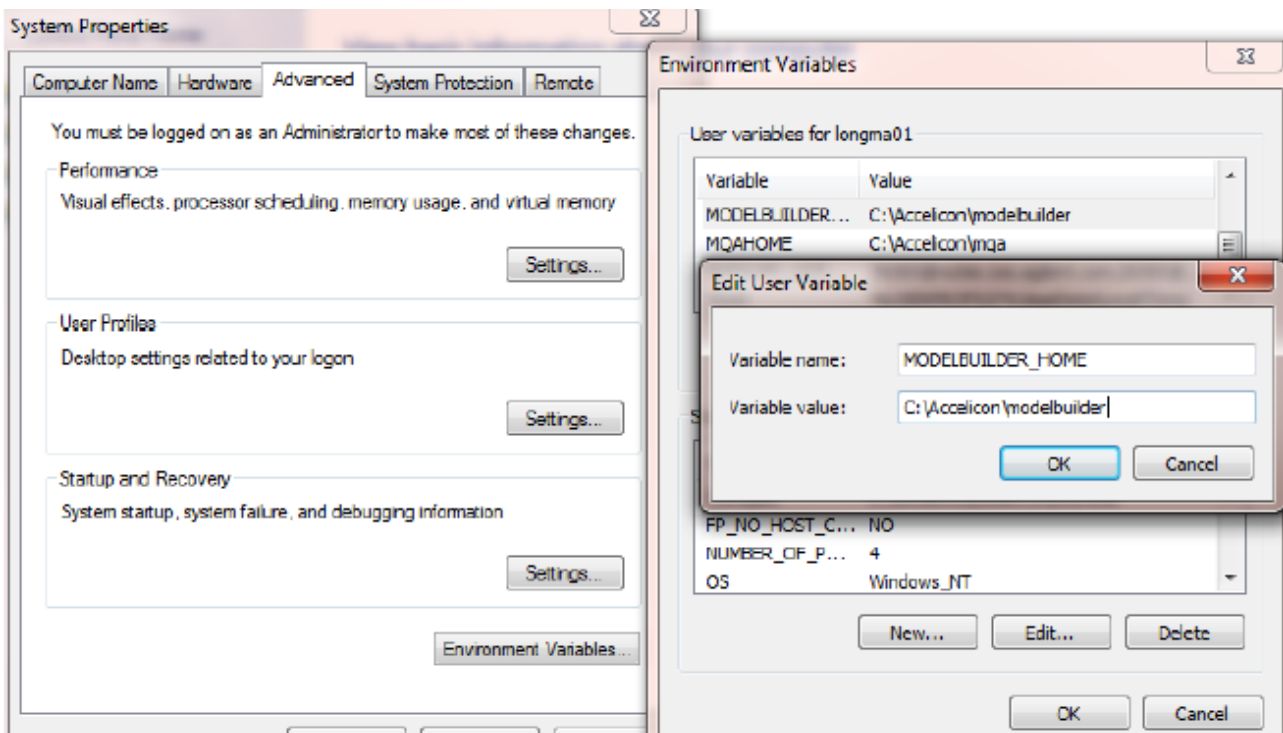
Go to <http://www.agilent.com/find/eesof-mbp-latest-downloads> for the product download. Choose Windows or Linux depending on the operating system of the machine to install and run MBP. Install FlexNet Licensing Software to setup your licenses to run MBP. Select the FlexNet Licensing Software tab and download Windows, Linux or Solaris FlexNet 11 software depending on the operating system of the machine, that is, your license server. The FlexNet 11 software download includes: FlexNet software and avpmqa vendor daemon to serve your MBP license(s).

### 2.1.2 Install and Configure (Windows)

This section describes how to install product and set up license on the Windows operating system.

To install the MBP software, double-click the MBP .exe file you downloaded from the Agilent EEs of EDA MBP download page and follow the installation instructions presented on the screen. The installation program installs the software and asks for PC reboot to complete the installation. Once the installation and reboot is complete, and assuming you accepted the default installation folder, the MBP software gets installed in the C:\Accelicon folder on your machine.

During installation, the MODELBUILDER\_HOME environment variable is added to the **User Variables** on your machine. You may want to verify that this environment variable is set to the correct MBP installation folder. Right-click **MY Computer** on your Windows Desktop, select **Properties** and then **Advanced System** settings. Click the **Environment Variables** button and look under **User Variables** for MODELBUILDER\_HOME. It should be set to the installation folder of MBP on your machine. For example, C:\Accelicon\modelbuilder.



Now, you are ready to set up your licenses to run MBP properly. First, apply for your licenses from [Agilent EEs of EDA](#).


Once you receive your licenses, you are ready to begin License Setup. License setup involves establishing a license server to serve the licenses and configuring the machine that should run MBP to checkout licenses from the license server. The machine that runs MBP and checkout licenses is known as the client.

A typical scenario is to install MBP and serve MBP licenses on the same machine. In such a scenario, you would do the Server Setup and Client Setup all on the same machine. If your license server is on a different machine than the one you run MBP on, do the Client Setup on the machine that is used to run MBP and do the Server Setup on the remote license server machine.

## Server Setup

Follow the steps below to install and configure the FlexNet server on a Windows system:

1. Download the Windows version of FlexNet server package. Unzip all the FlexNet files into one folder on your computer (e.g. `c:\FlexNet`). Skip this step if you already have FlexNet 11 installed on your computer.
2. Save the license file you received from Agilent EEs of EDA, rename it to `license.lic` and copy `license.lic` into the same folder in which you installed FlexNet in the previous step.

 Do not save the license file (`license.lic`) under `$MBPHOME\lic` as MBP will recognize it as Accelicon's proprietary node-locked license. It may cause MBP start to fail.

3. One example of your license file is shown below:

```
SERVER this_host E4115B397509 5800
VENDOR avpmqa
INCREMENT AMA_SIMIF avpmqa 2011.1000 10-jun-2012 1 ISSUER=LICENSEID=2473740 5
20A9 DD07 D33C 7175 214D DE72 39F4 08D6 504B 1601 239F 5F66 0167 4ABE
```

The SERVER line contains a special wildcard hostname (**this\_host**), your machine's Host ID and a port number of 5800.

### Hostname

The special wildcard hostname **this\_host** causes FlexNet to automatically use the hostname of your machine and you normally do not need to edit the license file. You can determine your machine's hostname by opening a Windows command prompt (**Start > All Programs > Accessories > Command Prompt**) and entering the command:

```
hostname
```

### Host ID

The host ID cannot be changed and you should never modify it. (If the host ID is not correct, then you need to have new license generated using the correct host ID.)

### Port Number

The port number 5800 is the default port used for MBP licenses. If this port is already in use on your machine, you can change it to any free port number. FlexNet commonly uses ports in the range 27000 to 27009, so it is a good idea to use a free port in this range if you can't use port 5800.

4. Open a command prompt (**Start > All Programs > Accessories > Command Prompt**) and change directory to where your FlexNet 11 software and `license.lic` file are located.

```
cd \FlexNet
```

Run the following command to start the license server:

```
lmgrd -c license.lic -l agilent.log
```

One alternative method is to create a file using Notepad (**Start > All Programs > Accessories > Notepad**) and put the following command line in, then save the file as `autostart.bat`.

Double-click `autostart.bat` to start the license server.

```
c:\FlexNet\lmgrd -c c:\FlexNet\license.lic -l c:\FlexNet\agilent.log
```

5. Whenever the server computer is restarted, run the following command manually to restart the license service.

```
lmgrd -c license.lic -l agilent.log
```

Or you can configure the program to start automatically with the computer. One possible method is: click **Start > All Programs** , right-click the `Startup` folder and then click **Open** .

Copy the `autostart.bat` file generated in the previous step to the popup folder. Ensure to allow the program to run automatically next time when you restart the computer.

The configuration on the server should now be complete.

## Client Setup

The client is the computer where MBP is installed. For MBP to run successfully, it must be able to find the license server and checkout a license. This is done by setting an environment variable named `LM_LICENSE_FILE` that MBP to find the license server and request a license.

1. Right-click **My Computer**, select the **Properties** menu, and then click the **Advanced** tab or **Advanced System Settings**. Click the **Environment Variables** button. Edit the variable named `LM_LICENSE_FILE` (or add a new one if none exists) and append the value using the format `port@host`. Here, `port` is the port number specified on the `SERVER` line in the license file during the server setup and `host` can be either the hostname or IP address of the license server computer.
  - If the client and the license server are the same machine, you can set `LM_LICENSE_FILE` as `5800@127.0.0.1`(or `5800@localhost`).
  - For the remote mode, contact your IT admin for the information about `port` and `host`. For example, the following are permissible formats: `5800@myserver` or `5800@192.168.0.1`. For three-server redundant server configurations, use a comma separated list of three `port@host` declarations which specifies the three-server redundant configuration. For example, `port1@host1,port2@host2,port3@host3` specifies the three-server redundant configuration composed of `host1`, `host2`, and `host3`.
2. If the v11 version of FlexNet is installed, rename `flexlmv10.txt` in folder `$MBPHOME\lic` to `flexlmv11.txt`. Skip this step if v10 version of FlexNet is used.
3. Launch MBP by clicking the corresponding icon.

### 2.1.3 Install and Configure (Linux)

This section describes how to install product and set up license on the Linux operating system.

From a Linux terminal (command prompt), move the `mbpinstall.gz` file you downloaded from the Agilent EEsof EDA MBP download page to the directory you want to install MBP in. For example,

```
mv mbpinstall.gz /home/username/apps/
```

Then, un-compress `mbpinstall.gz` and change permissions to make the resulting `mbpinstall` file executable:



```
gzip -d mbpinstall.gz
chmod 755 mbpinstall
```

Run `mbpinstall` and follow the onscreen instructions to install MBP:

```
./mbpinstall
```

Once the installation finishes, add the installation directory to your PATH environment variable for your login.

If you are using bash shell, add the following to the end of your `~/.bash_profile` or `~/.bashrc` file:

```
export PATH=$PATH:/home/username/apps/Accelicon/modelbuilder/bin
```

If you are using C shell, add the following to the end of your `~/.tcshrc` or `~/.cshrc` file:

```
set PATH=( $PATH /home/username/apps/Accelicon/modelbuilder/bin )
```

Once you have added the MBP installation directory to your PATH, you can open a new terminal or logout and login again to activate the changes you made to your login's profile.


Now, you are ready to setup your licenses to run MBP properly. First you must apply for your licenses from [Agilent EEsof EDA](#).

Once you receive your licenses, you are ready to begin License Setup. License setup involves establishing a license server to serve the licenses and configuring the machine that runs MBP to checkout licenses from the license server. The machine that runs MBP and checkout licenses is known as the client. A typical scenario is to install MBP and serve MBP licenses on the same machine. In such a scenario, you would do the Server Setup and Client Setup all on the same machine. If your license server is a different machine than the one you run MBP on, do the Client Setup on the machine that runs MBP and do the Server Setup on the remote license server machine.

## Server Setup

Follow the steps below to install and configure the FlexNet server on a Linux system:

1. Download the Linux version of FlexNet server package. Unzip all the FlexNet files into one folder on your computer (e.g. `/home/username/agilent/license/`). Skip this step if you already have FlexNet 11 installed on your computer.
2. Save the license file you received from Agilent EEsof EDA, rename it `license.lic` and copy `license.lic` into the same folder in which you installed FlexNet in the previous step.

 Do not save the license file (`license.lic`) under `$MBPHOME\lic` as MBP will recognize it as Accelicon's proprietary node-locked license. It may cause MBP start to fail.

3. One example of your license file is shown below:

The SERVER line contains a special wildcard hostname (**this\_host**), your machine's host ID and a port number of 5800.

### Hostname

The special wildcard hostname **this\_host** causes FlexNet to automatically use the hostname of your machine and you normally do not need to edit the license file. However, there are some cases when you may need to specify your machine's hostname. If so, edit the license file and change **this\_host** to be the hostname of your machine. You can determine your machine's hostname by opening a terminal and entering the command:

```
hostname
```

### Host ID

The host ID cannot be changed and you should never modify it. (If the host ID is not correct, then you need to have new license generated using the correct host ID.)

### Port Number

The port number 5800 is the default port used for MBP licenses. If this port is already in use on your machine, you can change it to any free port number. FlexNet commonly uses ports in the range 27000 to 27009, so it is a good idea to use a free port in this range if you can't use port 5800.

4. Open a terminal and change directory to where your FlexNet 11 software and license file are located.

```
cd /home/username/agilent/license/
```

Then run the following command:

```
./lmgrd -c ./license.lic -l ./agilent.log
```

You can read the contents of the `agilent.log` file to verify your licenses have started correctly.

5. Whenever the license server is restarted, run the `lmgrd` command to restart the license server. Your license server setup is now complete.

Now you are ready to do the client setup.

## Client Setup

The client is the computer where MBP is installed. For MBP to run successfully, it must be able to find the license server and checkout a license. This is done by setting an environment variable named `LM_LICENSE_FILE` that MBP uses to find the license server and request a license.

1. Set the environment variables for the license to the shell configuration file following the format *port@host*. Here port is the port number specified on the SERVER line in the license file during the server setup and host can be either the hostname or IP address of the license server computer.
  - For the C shell user, add `setenv LM_LICENSE_FILE port@host` to your `~/tcshrc` or `~/cshrc` file.
  - For the bash shell user, `export LM_LICENSE_FILE=port@host` your `~/bash_profile` or `~/bashrc` file.

If the client and the license server are the same machine, you can specify *port@host* as:  
5800@127.0.0.1 (or 5800@localhost)

For the remote mode, contact your IT admin for the information about port and host. For example, the following are permissible formats:5800@myserver or 5800@192.168.0.1, or 5800@192.168.0.1

For three-server redundant server configurations, use a comma separated list of three *port@host* declarations which specifies the three-server redundant configuration.

  - For the C shell user, add `setenv LM_LICENSE_FILE port1@host1,port2@host2,port3@host3`.
  - For the bash shell user, add `export LM_LICENSE_FILE=port1@host1,port2@host2,port3@host3`.
2. If the v11 version of FlexNet is installed, rename `flexlmv10.txt` in the folder `$MBPHOME\lic` to `flexlmv11.txt`. Skip this step if the v10 version of FlexNet is used.
3. Open a new terminal window to launch MBP.