

MBP 2017

MBP 2017 Update 1.0 Release Notes

Notices

© Keysight Technologies Incorporated, 2002-2018

1400 Fountaingrove Pkwy., Santa Rosa, CA 95403-1738, United States

All rights reserved.

No part of this documentation may be reproduced in any form or by any means (including electronic storage and retrieval or translation into a foreign language) without prior agreement and written consent from Keysight Technologies, Inc. as governed by United States and international copyright laws.

Restricted Rights Legend

If software is for use in the performance of a U.S. Government prime contract or subcontract, Software is delivered and licensed as "Commercial computer software" as defined in DFAR 252.227-7014 (June 1995), or as a "commercial item" as defined in FAR 2.101(a) or as "Restricted computer software" as defined in FAR 52.227-19 (June 1987) or any equivalent agency regulation or contract clause.

Use, duplication or disclosure of Software is subject to Keysight Technologies' standard commercial license terms, and non-DOD Departments and Agencies of the U.S. Government will receive no greater than Restricted Rights as defined in FAR 52.227-19(c)(1-2) (June 1987). U.S. Government users will receive no greater than Limited Rights as defined in FAR 52.227-14 (June 1987) or DFAR 252.227-7015 (b)(2) (November 1995), as applicable in any technical data.

Portions of this software are licensed by third parties including open source terms and conditions. For detail information on third party licenses, see [Notice](#).

Contents

Enhancement	5
New Re-centering Function	5
New Internal Engine Support	5
New Auto Save Feature	5
GUI	6
Script	6
Issues Fixed	6
Known Issues	7
Operating System Support	8
Licensing	9
Known Issues - Licensing	10

Enhancement

New Re-centering Function

- In release, you can a CSV table as input data or import from the DP data directly. Sample CSV table:

Instances	Name	MBP_NAME				
	W UM	W	10	10	1	1
	L UM	L	1	10	1	10
	T_C	T	25	25	25	25
Constants						
Supply Voltage [V]	VGG_V		1.5	1.5	1.5	1.5
Supply Voltage [V]	VDD_V		1.5	1.5	1.5	1.5
Supply Voltage [V]	VBB_V		-1.5	-1.5	-1.5	-1.5
Supply Voltage [V]	VDLIN_V		0.05	0.05	0.05	0.05
Targets						
	Ioff5_A		4.28E-02	4.27E-02	4.27E-02	0.04268
	Ion3_A		33.53477	3.547816	32.59863	3.450456
	Vth3_V		0.307979	0.27055	0.33019	0.292761
	Vth5_V		0.26207	0.227685	0.284306	0.24989

- You can enable or disable the Re-centering feature from the Exaction > Re-centering menu.
The Target table displays the Input Data table. The Error table displays the simulation value, error, and pass status.
- The Parameters can be selected and tuned using the Parameter panel, as in a regular MBP operation.
Optimization is also available by selecting target and parameters to optimize.
- Target related plots can be shown in the MBP browser by clicking on the target in the table. The plot displays the target value, simulation curve and pass criteria

New Internal Engine Support

- Support BSIM 6.1.1
- Support UTSOI 2.2
- Support Mextram 504.11
- Support M multiplier as device instance parameter for BSIM-CMG and BSIM-IMG

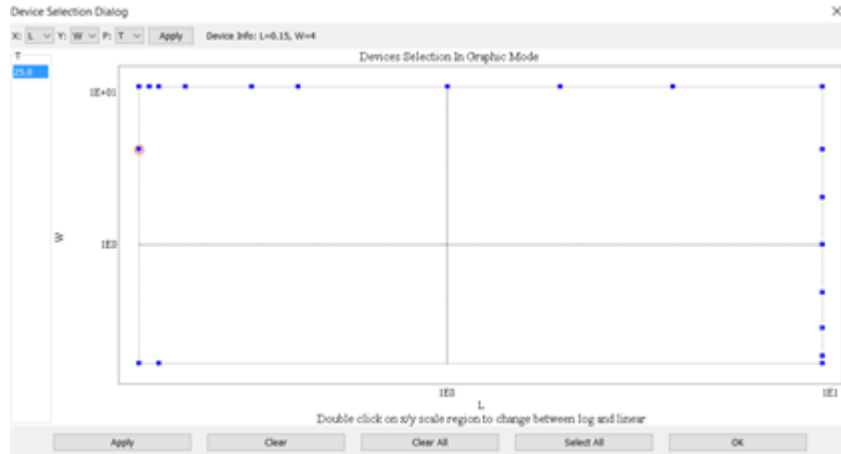
New Auto Save Feature

- You can enable this feature using the Menu Tool > Preferences > Advanced Options menu. You can also set the duration for auto save and the number of copies.
- If this is enabled, MBP creates a temporary folder under the user directory ..\mb_set\temp, and saves the project copies into this folder.

- If MBP exits abnormally and the auto save is enabled, MBP shows a prompt to open the auto saved project when you restart MBP.

GUI

- Supports user-defined X, Y, Z instance in the Device Selection dialog:



- Added an option to show the trend line for the correlation plot of two targets in statistical feature: Statistical Graph Config > Draw Linear Fitting.

Script

- You can select abs or real error value in ErrorDataGrid.
- You can set the script customized dialog window as non-modal or modal.

Issues Fixed

- Fixed the issue of the BSIMSOI 4.5 internal simulation that was abnormal.
- Fixed the BSIM6 internal engine simulation issue related to the parameter k2.
- Fixed the spec import function failure issue for Corner Tweaking feature in some cases.
- Fixed the issue that only one plot can be shown at the same time when using Corner Tweaking.
- Fixed the issue that after appending data, the log display was not displayed on GUI.

Known Issues

- If McAfee antivirus is running, it may pause the installation. On disabling the Security firewall option in McAfee antivirus settings, the installation works fine. After the installation is complete, enable the Security firewall option in the McAfee antivirus settings.

Operating System Support

For more information on supporting Operating System (OS), see [Supported Platforms](#).

Licensing

- MBP requires: a) the version 2017.01 of the EEsof EDA licensing software, b) a minimum code-word version 2017.01 or above, and c) the licensing server software, *lmgrd* and *agileesofd*, to be upgraded to at least the same versions as what are included in EEsof EDA Licensing software 2017.01. MBP will not start if any of these requirements is not met. Refer to the [License Codeword Version Compatibility](#) Table.
- In the EEsof EDA License Tools version 2017.01, licensing vendor daemon (*agileesofd*) is integrated with FlexNet FNP 11.13.1.4 version (Windows) and FlexNet FNP 11.13.1.3 version (Linux) of FlexNet license manager daemon (*lmgrd*). For the Windows platform, MBP installer will automatically set up these two new license server daemons by default for the local node-locked license users; for the Linux platform, you need to follow the [Linux/Solaris Licensing Setup](#) instruction to complete the licensing configuration process. For more details, refer to [Licensing \(For Administrators\)](#).
- The issue related to the vendor daemon *agileesofd* could sometimes crash while the License Manager and the Product Selector was running on a remote Windows 8 machine has now been fixed with the newer FlexNET publisher 2015 (also known as version 11.13.1) that is automatically installed by the MBP installer.
- Unable to setup MBP Licenses using License Setup Wizard

Known Issues – Licensing

- Dongle drivers for Flex-10 dongles on Linux are release specific. Installing the latest dongle drivers on Linux will function properly only for the most recent EEsof releases.
Workaround: Install and use dongle drivers as needed. If you need to run the most recent EEsof releases, use the latest Flex-10 dongle driver. If you need to use older releases, uninstall the latest dongle driver and re-install the older dongle driver
- FLO and EEsof License setup are writing server logs at different locations. However, the EEsof server log file location is updated in the License Manager > Environment tab.
- When multiple *same-named* INCREMENT lines *of different version* exist on the license server, few advanced FlexNet options to reserve/limit licenses may not work properly.
- Product Selector “Check Availability” generates incorrect results (which leads to license failure) for older releases when multiple date base versions of like-named bundles exist in the license pool.
- Starting from FlexNet Publisher 2015 (also known as version 11.13.1), the adoption of the best practice of the least-privilege security therein results in the License Server related Windows Service to run with the LocalService Account privilege (instead of the LocalSystem privilege as before.) Running with the LocalService Account privilege, an executable can no longer access any files located in the per-user specific type of folders. As a result, any license file placed in those folders can no longer be accessed by the License Server when the License Server is automatically started via the Windows Service upon each PC reboot. For the local node-locked license, this would not result in any disruption to the usage of EEsof applications; however, for the license installed on a network PC that is accessed by multiple client PCs, this may cause EEsof applications not to start after the network PC reboots
Workaround: Store your license files in the Windows folders that are accessible by the LocalService Account privilege. For example, C:\ProgramData or C:\users\public are both qualified choices. In general, any folder that has the “Users” group listed in its Properties>Security page and this “Users” group has the *read* permission enabled should work.
- Starting from FlexNet Publisher 2015 (aka version 11.13.1), the default licensing timeout is set to 3 seconds (from the previous 0.1 second) to better accommodate systems with high network latency. This could cause certain utilities in the License Manager to perform slower than before.
Workaround: Set the FlexNet licensing timeout to 0.2 seconds, via setting the environment variable `FLEXLM_TIMEOUT=200000`, to minimize the performance degradation. However, if the network latency is already an issue in your environment, you may need to fine-tune this setting to minimize the general performance degradation while still accommodating the network latency.

- Installation of EESof EDA tools (such as, SystemVue 2016.08, Genesys 2017.XX, or ADS 2017.XX) may hang at 4% (percentage vary based on the products) for few hours or even more on some specific machines.

Workarounds:

- Disable Firewall setting in Anti-Virus Software installed on the PC.
or
- Download and unzip process explorer from the below link and then invoke *procexp.exe*.
<https://technet.microsoft.com/en-us/sysinternals/processexplorer.aspx>
Right click on the *wusa.exe* process under <Product installer exe> and select KillProcess. Now it will continue the product installation.
- After installing EESof EDA tools (such as, SystemVue 2016.08, Genesys 2017.XX, or ADS 2017.XX) successfully and try to invoke the software or License wizard, you may encounter “api-ms-win-crt-runtime-l1-1-0.dll” missing error.
Workaround: Install the Update for Universal C Runtime in Windows . On Windows 64-bit system systems, the file to install is x64 version of the Microsoft hotfix KB2999226. A copy of the Windows6.1-KB2999226-x64.msu Microsoft 64-bit hotfix installer can be found under the C:\Program Files\Keysight\EESof_License_Tools\bin directory. The Microsoft hotfix KB2999226 can be found under the Update for Universal C Runtime in Windows page at <https://support.microsoft.com/en-us/help/2999226/update-for-universal-c-runtime-in-windows> as well.
- On a newly formatted RHEL system, the EESof Licensing tools may fail to boot. This is because the FlexNet Publisher 2015 requires a certain rpm
Workaround: Under the EESof product installation directory, there exists a utility script named "*Linux_sys_check.sh*" under the *bin* directory. Run this script to find out whether any rpm is missing; run this script with a "-y" command-line option to also have all the missing rpms automatically installed if you have the *sudo* or *root* privilege.
- License server may stop recognizing Flex-10 dongle on some systems within a few hours after starting
Workaround: If you experience this problem, install the latest WibuKey drivers from [Wibu Systems](#).
- Unable to install Flex-10 driver if Flex-9 dongle is already plugged into a machine
Workaround: Before installing a Flex-10 driver for the first time, unplug the Flex-9 dongle.

- There is a known FlexNet Publisher issue, whereby mixing node-locked codewords and floating codewords in one license file can result in: a) Remote simulations not working or b) A second local simulation not working in case the license is node-locked and also has incorrect version.
Workaround: It is strongly recommended that you do not mix node-locked codewords and floating codewords in one license file nor in *any* configuration that ends up with node-locked codewords and floating codewords both available on the same server. In other words, put the node-locked license and the floating license on different servers, and point to the respective one based on what you need to run.
- If a user simultaneously runs two instances of a product and has mixed different versions of the same codeword on one license server, extra licenses may be pulled and result in unexpected “`Licensed number of users already reached for this feature`” errors.
Workaround: We recommend you remove expired codewords, to separate out the new and the old versions of codewords into different files and different servers, and to point to the respective one based on what you need to run.
- Not specifying the TCP/IP port for the license server during license setup may lead to unexpected behavior and/or license checkout failure on the Windows platform. We strongly recommend you to always explicitly specify the TCP/IP port associated with each license server.
- A node-locked and floating bundle operating on Linux cannot be shared between products using EDA License Tools version older than 2014.01 when run at the same time.

- License Setup Wizard does not remove any previous user-configured FLEX Windows License Service manually set up by a user using FlexNet's lmtools. Workaround: You must remove the previous user-configured Windows License Service via lmtools.

- Run the lmtools.exe from `C:\Program Files\Agilent\EEsof_License_Tools\bin` to invoke the lmtools utility. The lmtools utility window is displayed.

CAUTION If you have installed an EEsof product released before 1st August, 2014 on your system prior to installing an EEsof product released after 1st August, 2014 then the default EEsof Licensing tools path will remain `C:\Program Files\Agilent\EEsof_License_Tools`. On the systems that only have EEsof products released after 1st August, 2014 installed then the default EEsof Licensing tools path will be `C:\Program Files\Keysight\EEsof_License_Tools`.

- In the Service/License File tab, check the Configuration using Services option. All user-configured FLEX Windows License Services will be listed.
- Select the service you wish to remove.
- Select the Config Services tab and click the Remove Service button to remove the service.
To ensure that the license service or *lmgrd* is running, click View Log. A log window appears that confirms whether *agileesofd* and *lmgrd* are up and running.
- While running multiple versions of prior MBP releases together, set `MBP_MAXIMUM_BUNDLE_USAGE=ON` in your environment so that all of them will use the same method to check out licenses. Otherwise, you might receive an error message, "Licensed number of users already reached".
- On some Windows 7 machines, when more than one definition of an Ethernet adapter exists (duplicates), license checkouts may appear to hang up.
Workaround: Disable the duplicate network card definitions in your network settings: Control Panel > Network and Internet > Network Connections. This issue has been acknowledged by Flexera and they have created a bug report (SIOC-000103097).
- For LSF style distributed simulations, ensure that the PATH on the client computer points to the `$HPEESOF_DIR/EEsof_License_Tools/${architecture}` directory that corresponds to the EEsof release being used. This needs to be done in order to ensure that the proper version of the Flexera utilities (like *lmutil*) gets picked up in the path before any older incompatible versions (that may also be installed on a users' system.)

- License Setup Wizard (*aglmwizard.exe*), which is used to set up and record the license path would not work if you already have an environment variable set for MBP_LICENSE_FILE.
Workaround: You can use *MBP_LICENSE_FILE* variable to point to license file or refer to [Licensing \(For Administrators\)](#).
- The License Setup Wizard will exit or not properly configure a license server, if the server has all of its licenses currently in use.
Workaround: Wait for a license on the server to become available as you normally would before launching the product.
- Unable to set license in case unicode characters are used either in path or license file name because the Flex License Service does not support these characters.
- The Product Selector tool will be unable to display the license server status properly when connected to older license server.
Workaround: Upgrade your license server to the latest version.
- EEs of Licensing Tools installer can hang on systems with McAfee LiveSafe installed and running the default firewall settings.
Workaround: Prior to installing EEs of Licensing Tools, temporarily turn off the McAfee LiveSafe firewall.
- Licensing setup steps on systems with McAfee LiveSafe installed can fail.
Workaround: Under the McAfee LiveSafe firewall settings, under Port and Settings, allow the use of port 27001 for lmgrd.exe under the EEs of Licensing Tools installation bin directory. Under Internet Connections for Programs , enable lmgrd.exe, aglmmgr.exe and aglmwizard.exe for all devices and turn off monitoring.

This information is subject to change
without notice.

www.keysight.com

